

| | |
|----------------------|---------------|
| Set up: | HPT CROSSOVER |
| Month Tested | Jan-26 |
| HPT CROSS WIN RATIO: | 76.00% |

Required Specifications

Graphical

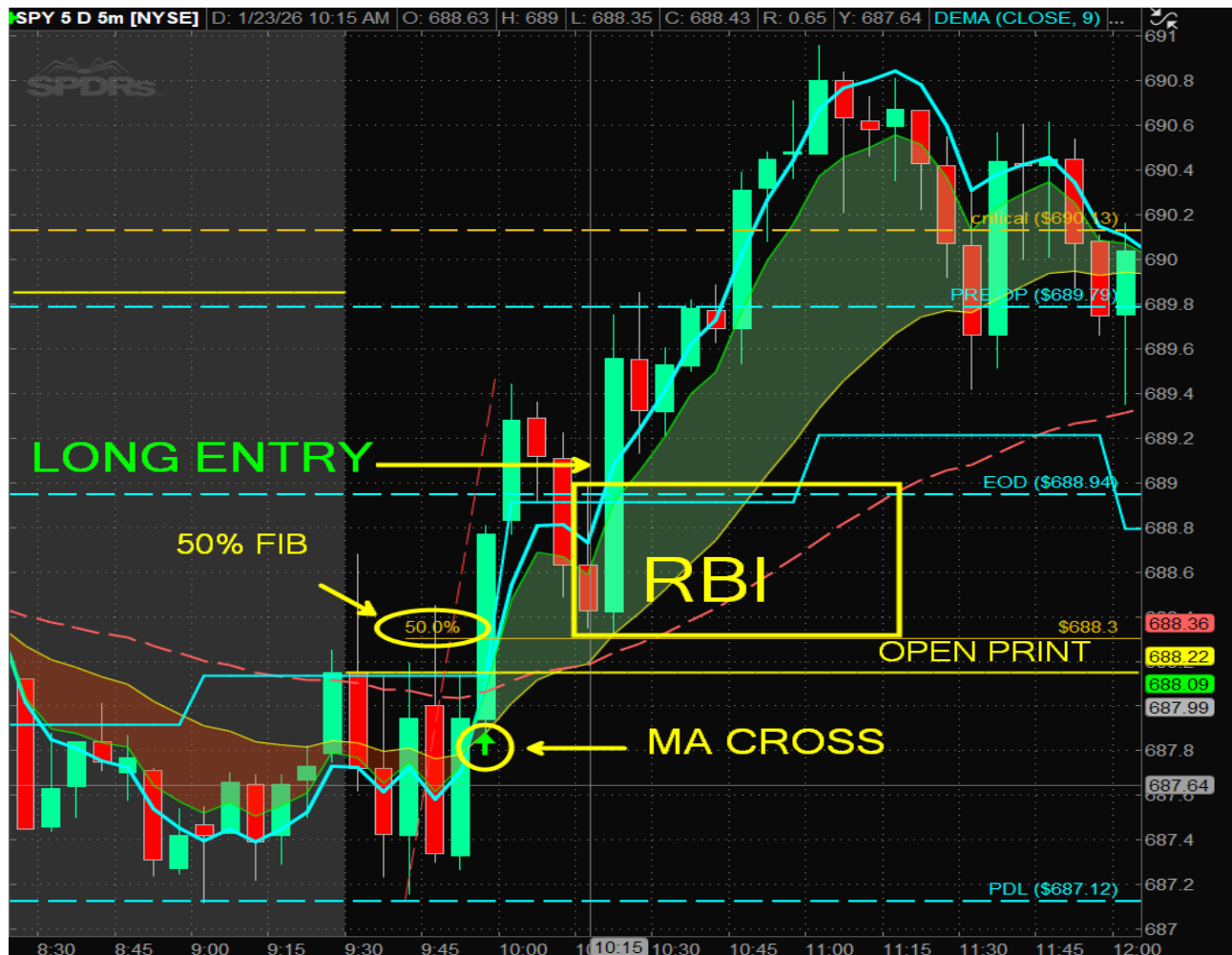
| | |
|-------------------------|--------------------------------------|
| Critical Level | Open Print |
| Moving Average Cross | 5 & 20 EMA |
| Entry Criteria | RBI/GBI |
| Specfic Time | Before Noon |
| Required Price Movement | +/- \$1.00 IN APPRIOPRIATE DIRECTION |

Initial Measurements

| | | | | |
|------------------------------------------------------------------------|---|----|----|---------------------------------------------------------------------------------------------|
| = 1 or more samples tested do not meet the HPT required specification. | | | | |
| Number of Trades that did not meet profitable requirments | 6 | of | 25 | Notes and Observations |
| | | | | Entries more that .70 away from the 1 hr trend have a lower probability of being successful |

EXAMPLE:

1/24/2026



HIGH TRADER PERFORMANCE

2025

| Month | # of Trades | Wins | Losses | Win Rate |
|-----------|-------------|------|--------|----------|
| September | 18 | 14 | 4 | 77% |
| October | 17 | 14 | 3 | 82% |
| November | 19 | 17 | 2 | 89% |
| December | 15 | 11 | 3 | 73% |
| January | 16 | 13 | 3 | 81% |
| February | 20 | 17 | 3 | 85% |
| March | 21 | 18 | 3 | 85% |
| April | 21 | 16 | 4 | 80% |
| May | 21 | 16 | 5 | 76% |
| June | 21 | 16 | 5 | 76% |
| July | 19 | 12 | 7 | 65% |
| August | 21 | 16 | 5 | 76.00% |
| September | 19 | 11 | 8 | 59.00% |
| October | 18 | 16 | 2 | 77.00% |
| November | 20 | 15 | 5 | 76.00% |
| December | 29 | 20 | 9 | 70.00% |
| Total | 240 | 186 | 53 | 77.50% |

2026

| Month | # of Trades | Wins | Losses | Win Rate |
|---------|-------------|------|--------|----------|
| January | 25 | 19 | 6 | 76.00% |
| Total | 20 | 14 | 6 | 76.00% |

| | |
|----------------------|---------------|
| Set up: | HPT CROSSOVER |
| Month Tested | Jan |
| HPT CROSS WIN RATIO: | 72.00% |

Required Specifications

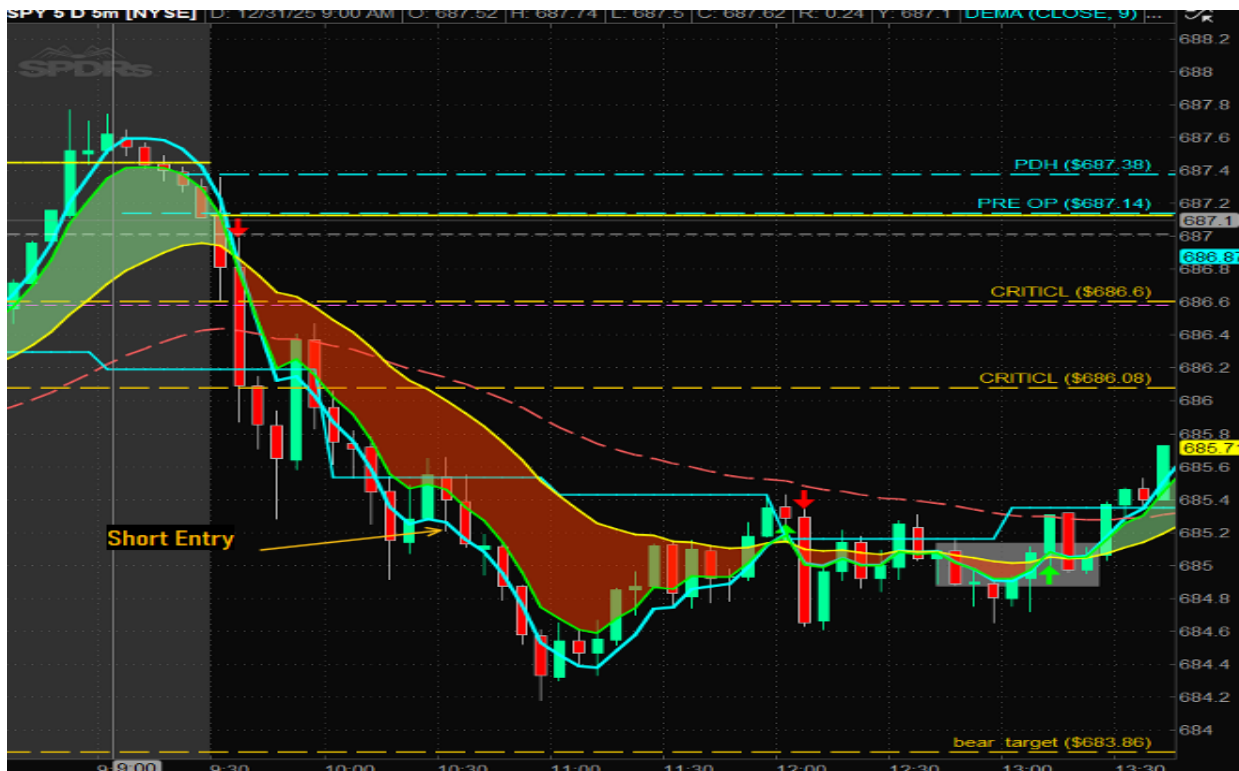
| Graphical | |
|-------------------------|--------------------------------------|
| Critical Level | Open Print |
| Moving Average Cross | 5 & 21 EMA |
| Entry Criteria | RBI/GBI |
| Specifc Time | Before Noon |
| Required Price Movement | +/- \$1.00 IN APPRIOPRIATE DIRECTION |

Initial Measurements

| | | | | |
|------------------------------------------------------------------------|---|----|---|------------------------|
| = 1 or more samples tested do not meet the HPT required specification. | | | | |
| Number of Trades that did not meet profitable requirments | 1 | of | 1 | Notes and Observations |
| | | | | at 1 hr trend |

Initial Measurements

1/1/2026



Notes

healthy 5 min trend and 1 hr trend supported continuation

| | |
|----------------------|---------------|
| Set up: | HPT CROSSOVER |
| Month Tested | Jan |
| HPT CROSS WIN RATIO: | 72.00% |

Required Specifications

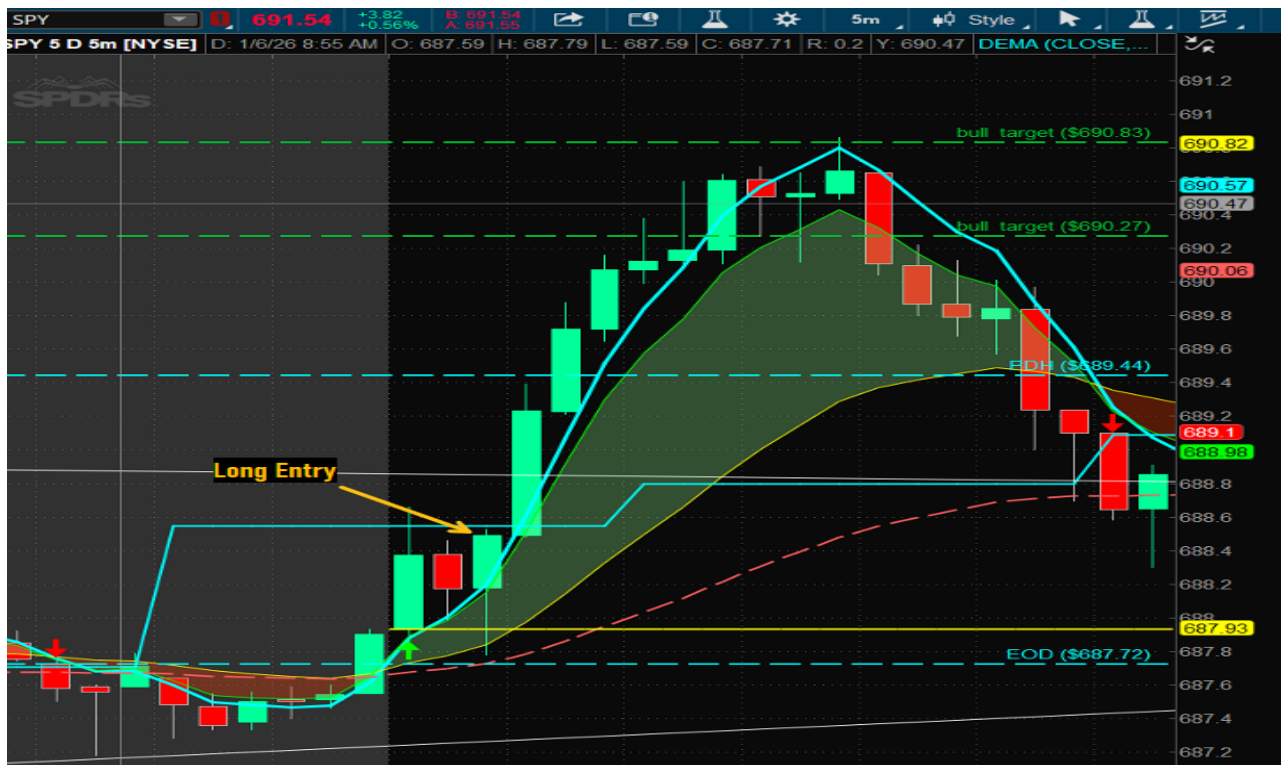
| Graphical | |
|-------------------------|--------------------------------------|
| Critical Level | Open Print |
| Moving Average Cross | 5 & 21 EMA |
| Entry Criteria | RBI/GBI |
| Specfic Time | Before Noon |
| Required Price Movement | +/- \$1.00 IN APPRIOPRIATE DIRECTION |

Initial Measurements

| | | | | |
|------------------------------------------------------------------------|---|----|---|------------------------|
| = 1 or more samples tested do not meet the HPT required specification. | | | | |
| Number of Trades that did not meet profitable requirments | 2 | of | 5 | Notes and Observations |
| | | | | at 1 hr trend |

Initial Measurements

1/6/2026



Notes

respect 2 min 20
respect 5 min 20
bounce off open print

Set up: HPT CROSSOVER

Month Tested: Jan

HPT CROSS WIN RATIO: 72.00%

Required Specifications

Graphical

| | |
|-------------------------|--------------------------------------|
| Critical Level | Open Print |
| Moving Average Cross | 5 & 21 EMA |
| Entry Criteria | RBI/GBI |
| Specfic Time | Before Noon |
| Required Price Movement | +/- \$1.00 IN APPRIOPRIATE DIRECTION |

Initial Measurements

 = 1 or more samples tested do not meet the HPT required specification.

| | | | | |
|-----------------------------------------------------------|---|----|---|------------------------|
| Number of Trades that did not meet profitable requirments | 3 | of | 5 | Notes and Observations |
| | | | | AT 1 hr 9DEMA |

Initial Measurements

1/6/2026



Notes

GBI had a 2 green bars
Price action getting better but still very choppy when volume is LOW
Shorting into a previous critical level

Set up: HPT CROSSOVER

Month Tested Jan

HPT CROSS WIN RATIO: 72.00%

Required Specifications

Graphical

| | |
|-------------------------|--------------------------------------|
| Critical Level | Open Print |
| Moving Average Cross | 5 & 21 EMA |
| Entry Criteria | RBI/GBI |
| Specfic Time | Before Noon |
| Required Price Movement | +/- \$1.00 IN APPRIOPRIATE DIRECTION |

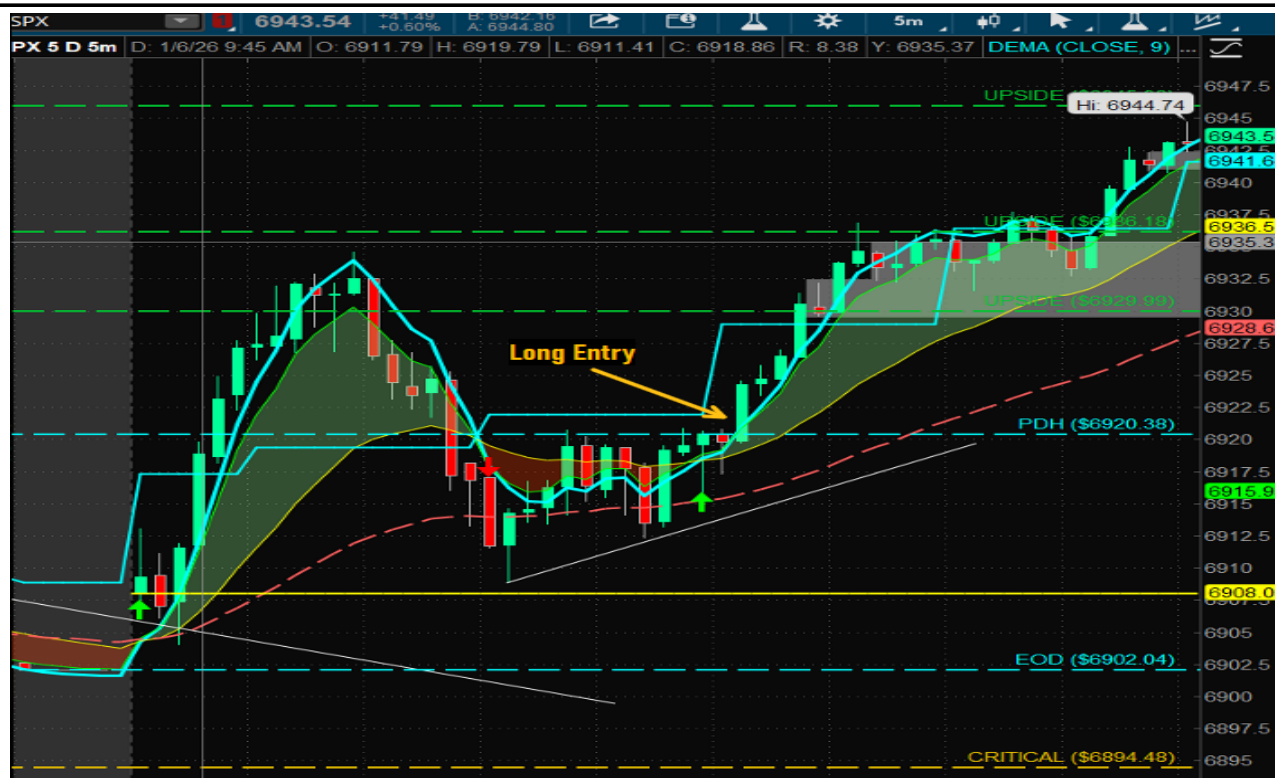
Initial Measurements

 = 1 or more samples tested do not meet the HPT required specification.

| | | | | |
|-----------------------------------------------------------|---|----|---|------------------------|
| Number of Trades that did not meet profitable requirments | 3 | of | 5 | Notes and Observations |
| | | | | AT 1 hr 9DEMA |

Initial Measurements

1/6/2026



Notes

Once sellers lost the battle she reversed and RALLIED

Set up: HPT CROSSOVER

Month Tested Jan

HPT CROSS WIN RATIO: 72.00%

Required Specifications

Graphical

| | |
|-------------------------|--------------------------------------|
| Critical Level | Open Print |
| Moving Average Cross | 5 & 21 EMA |
| Entry Criteria | RBI/GBI |
| Specfic Time | Before Noon |
| Required Price Movement | +/- \$1.00 IN APPRIOPRIATE DIRECTION |

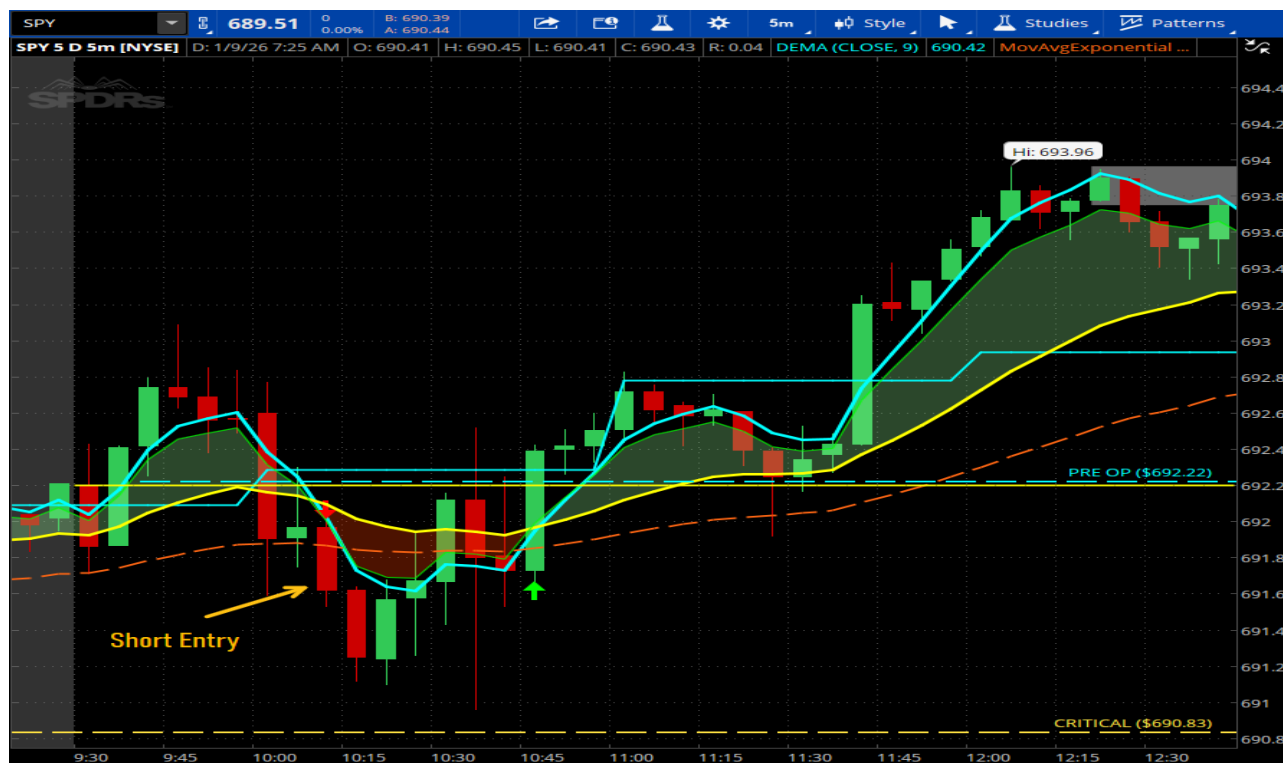
Initial Measurements

 = 1 or more samples tested do not meet the HPT required specification.

| | | | | |
|-----------------------------------------------------------|---|----|---|------------------------|
| Number of Trades that did not meet profitable requirments | 3 | of | 5 | Notes and Observations |
| | | | | AT 1 hr 9DEMA |

Initial Measurements

1/7/2026



Notes

off open print

Set up: HPT CROSSOVER

Month Tested Jan

HPT CROSS WIN RATIO: 72.00%

Required Specifications

Graphical

| | |
|-------------------------|--------------------------------------|
| Critical Level | Open Print |
| Moving Average Cross | 5 & 21 EMA |
| Entry Criteria | RBI/GBI |
| Specfic Time | Before Noon |
| Required Price Movement | +/- \$1.00 IN APPRIOPRIATE DIRECTION |

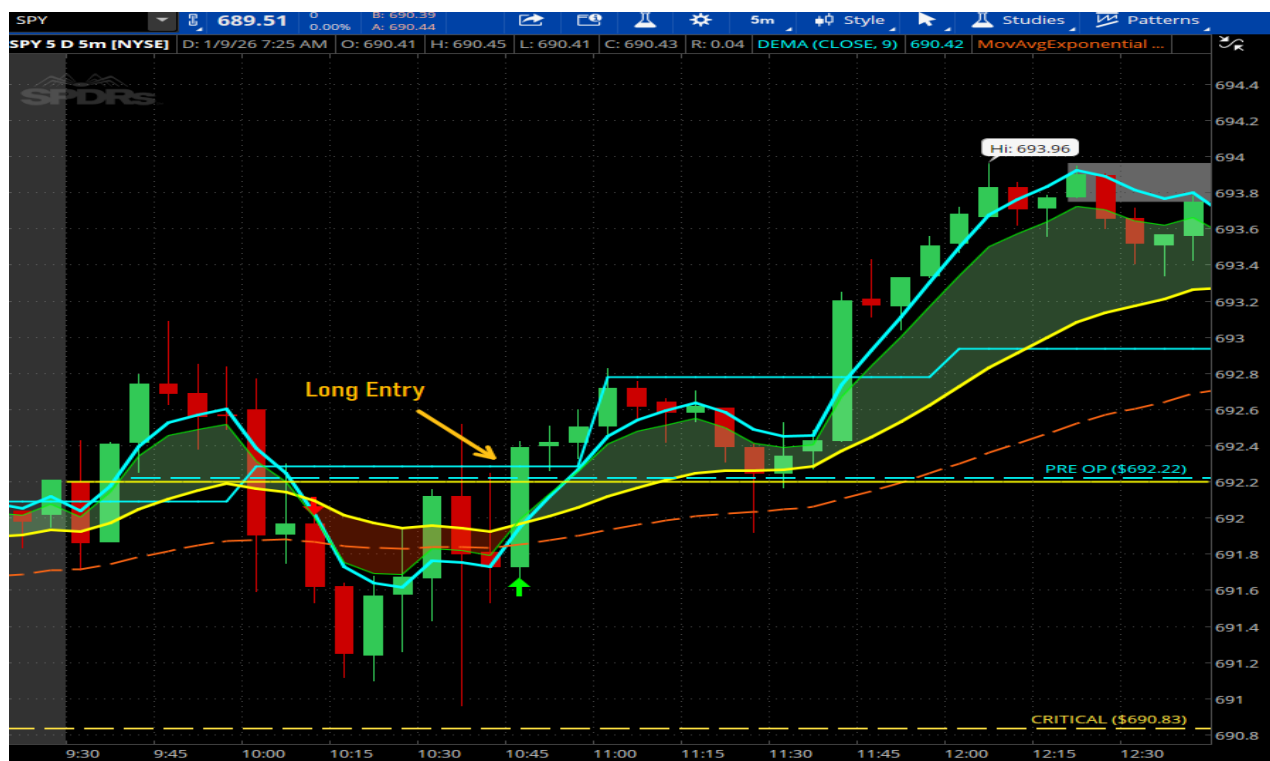
Initial Measurements

 = 1 or more samples tested do not meet the HPT required specification.

| | | | | |
|-----------------------------------------------------------|---|----|---|------------------------|
| Number of Trades that did not meet profitable requirments | 3 | of | 5 | Notes and Observations |
| | | | | AT 1 hr 9DEMA |

Initial Measurements

1/7/2026



Notes

off open print

| | |
|----------------------|---------------|
| Set up: | HPT CROSSOVER |
| Month Tested | Jan |
| HPT CROSS WIN RATIO: | 72.00% |

Required Specifications

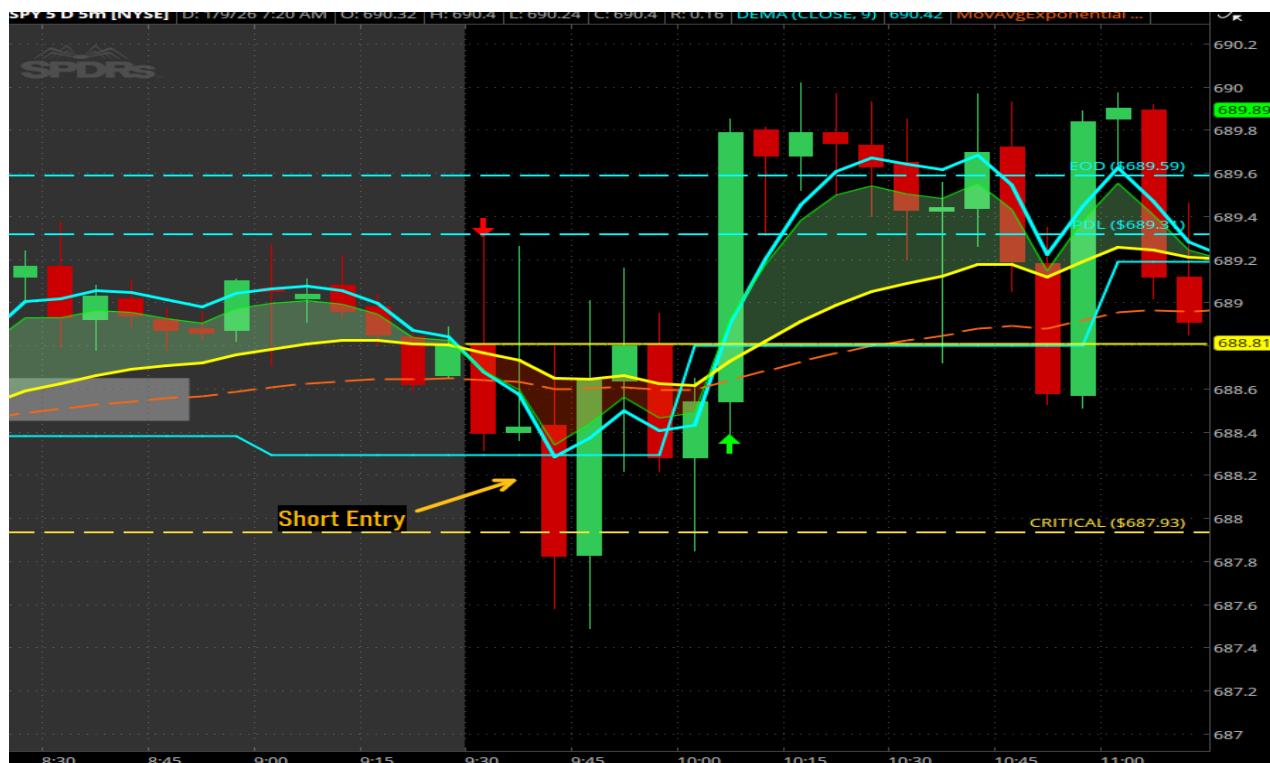
| Graphical | |
|-------------------------|--------------------------------------|
| Critical Level | Open Print |
| Moving Average Cross | 5 & 21 EMA |
| Entry Criteria | RBI/GBI |
| Specfic Time | Before Noon |
| Required Price Movement | +/- \$1.00 IN APPRIOPRIATE DIRECTION |

Initial Measurements

| | | | | |
|------------------------------------------------------------------------|---|----|---|------------------------|
| = 1 or more samples tested do not meet the HPT required specification. | | | | |
| Number of Trades that did not meet profitable requirments | 3 | of | 5 | Notes and Observations |
| | | | | AT 1 hr 9DEMA |

Initial Measurements

1/8/2026



Notes

off open print | Shorting into a key level of structure on a larger TF

| | |
|----------------------|---------------|
| Set up: | HPT CROSSOVER |
| Month Tested | Jan |
| HPT CROSS WIN RATIO: | 72.00% |

Required Specifications

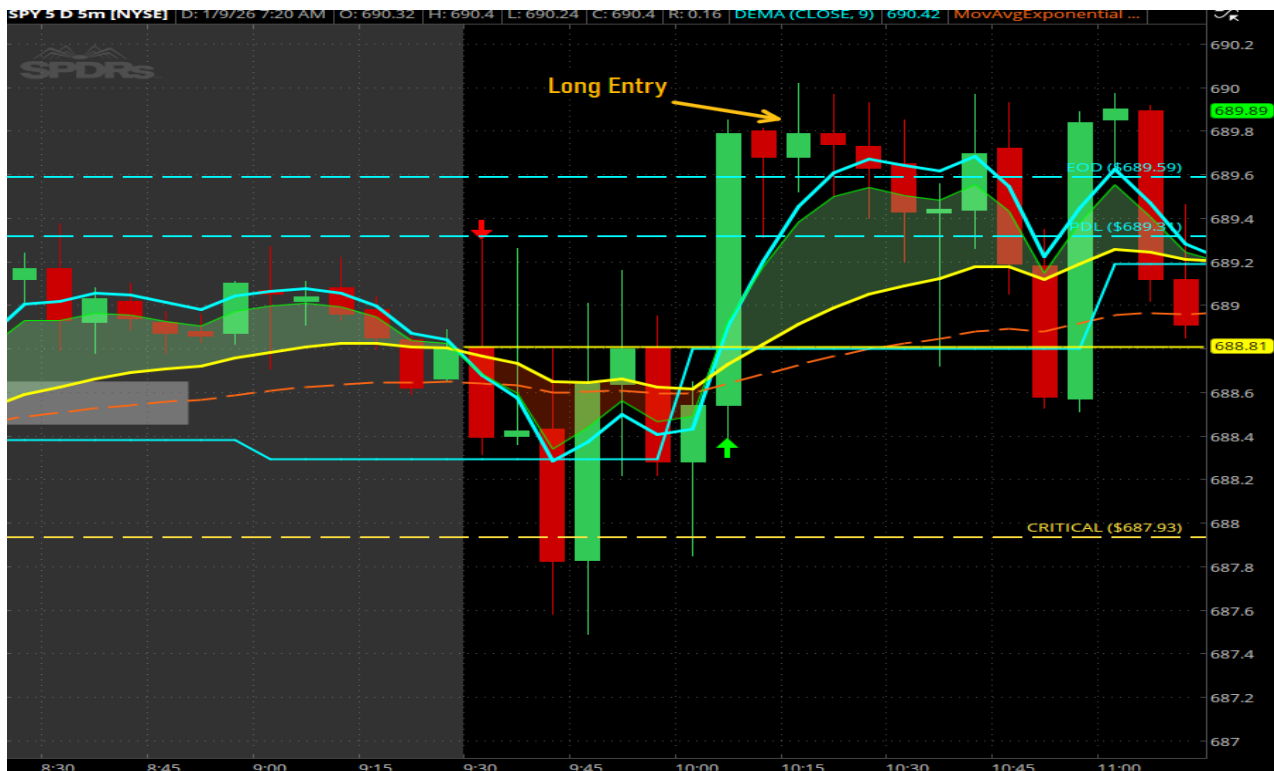
| Graphical | |
|-------------------------|--------------------------------------|
| Critical Level | Open Print |
| Moving Average Cross | 5 & 21 EMA |
| Entry Criteria | RBI/GBI |
| Specfic Time | Before Noon |
| Required Price Movement | +/- \$1.00 IN APPRIOPRIATE DIRECTION |

Initial Measurements

| | | | | |
|------------------------------------------------------------------------|---|----|---|------------------------|
| = 1 or more samples tested do not meet the HPT required specification. | | | | |
| Number of Trades that did not meet profitable requirments | 3 | of | 5 | Notes and Observations |
| | | | | AT 1 hr 9DEMA |

Initial Measurements

1/8/2026



Notes

Super choppy market

Set up: HPT CROSSOVER

Month Tested Jan

HPT CROSS WIN RATIO: 72.00%

Required Specifications

Graphical

| | |
|-------------------------|--------------------------------------|
| Critical Level | Open Print |
| Moving Average Cross | 5 & 21 EMA |
| Entry Criteria | RBI/GBI |
| Specfic Time | Before Noon |
| Required Price Movement | +/- \$1.00 IN APPRIOPRIATE DIRECTION |

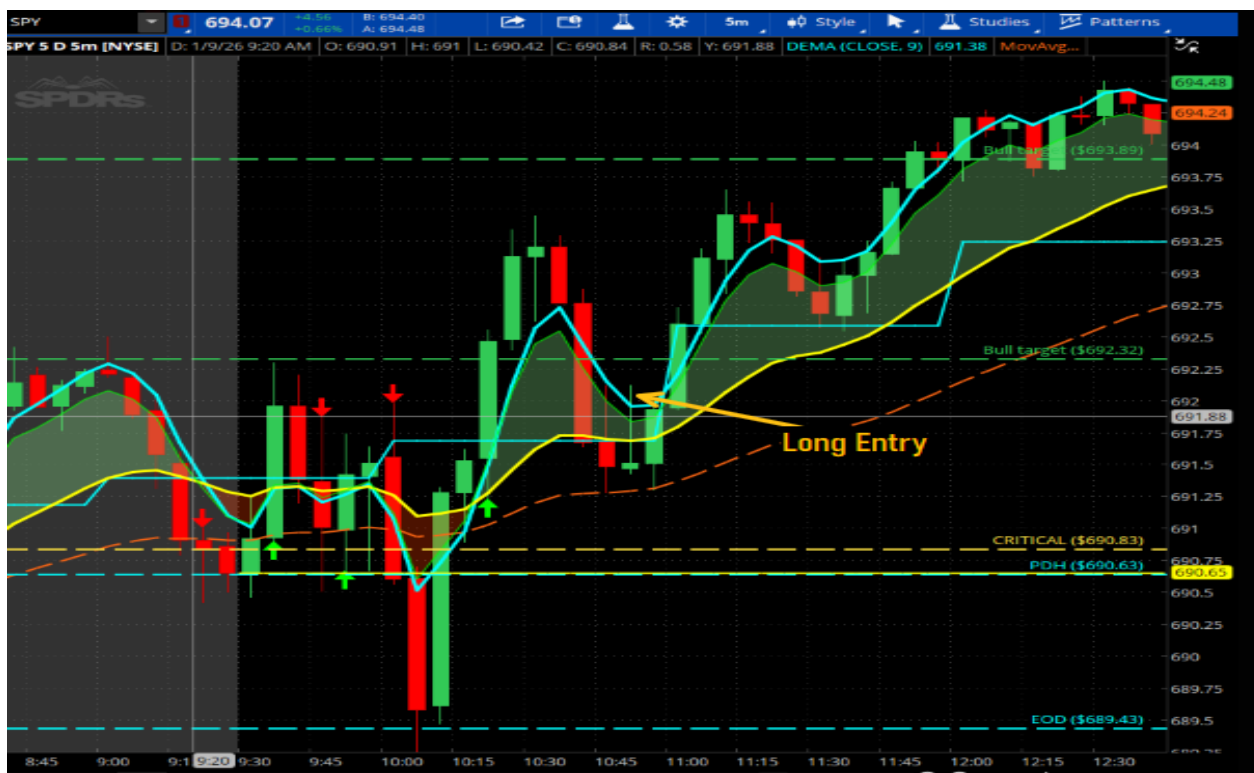
Initial Measurements

 = 1 or more samples tested do not meet the HPT required specification.

| | | | | |
|-----------------------------------------------------------|---|----|---|------------------------|
| Number of Trades that did not meet profitable requirments | 3 | of | 5 | Notes and Observations |
| | | | | AT 1 hr 9DEMA |

Initial Measurements

1/9/2026



Notes

Super choppy market

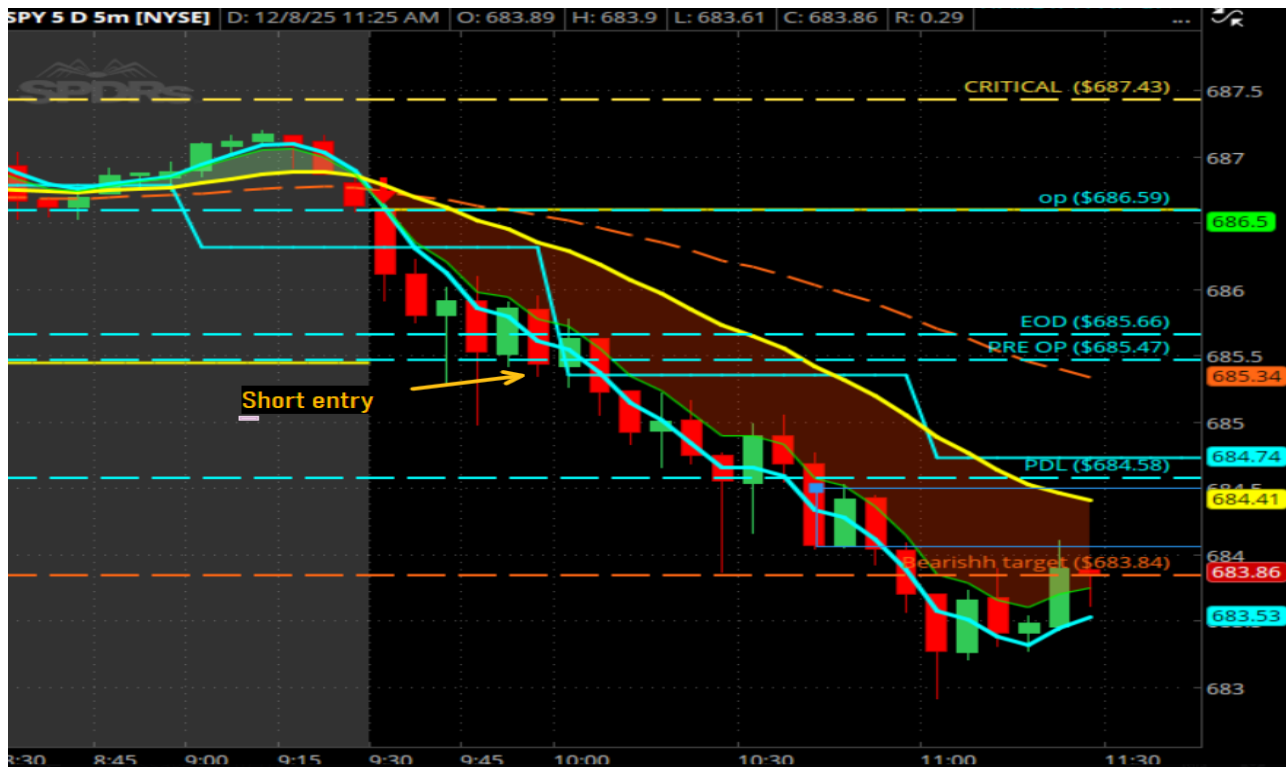
| | |
|----------------------|---------------|
| Set up: | HPT CROSSOVER |
| Month Tested | Jan-26 |
| HPT CROSS WIN RATIO: | 70.00% |

Required Specifications

| Graphical | | | | |
|-----------------------------|------------------------------------------------------------------------|--------------------------------------|----|------------------------|
| Critical Level | | Open Print | | |
| Moving Average Cross | | 5 & 20 EMA | | |
| Entry Criteria | | RBI/GBI | | |
| Specifc Time | | Before Noon | | |
| Required Price Movement | | +/- \$1.00 IN APPRIOPRIATE DIRECTION | | |
| <u>Initial Measurements</u> | | | | |
| | = 1 or more samples tested do not meet the HPT required specification. | | | |
| | 9 | of | 29 | Notes and Observations |
| | | | | Successful ORB |

Initial Measurements

12/8/2025



Notes

healthy 5 min trend
Healthy 1 hr trend
Trading into EOD

| | |
|----------------------|---------------|
| Set up: | HPT CROSSOVER |
| Month Tested | DEC |
| HPT CROSS WIN RATIO: | 72.00% |

Required Specifications

| Graphical | | | | |
|-----------------------------------------------------------|------------------------------------------------------------------------|--------------------------------------|---|------------------------|
| Critical Level | | Open Print | | |
| Moving Average Cross | | 5 & 20 EMA | | |
| Entry Criteria | | RBI/GBI | | |
| Specifc Time | | Before Noon | | |
| Required Price Movement | | +/- \$1.00 IN APPRIOPRIATE DIRECTION | | |
| <u>Initial Measurements</u> | | | | |
| | = 1 or more samples tested do not meet the HPT required specification. | | | |
| Number of Trades that did not meet profitable requirments | 2 | of | 2 | Notes and Observations |
| | | | | Unsuccessful ORB |

Initial Measurements

12/8/2025



Notes

Large GBI followed by GBI

| | |
|----------------------|---------------|
| Set up: | HPT CROSSOVER |
| Month Tested | DEC |
| HPT CROSS WIN RATIO: | 72.00% |

Required Specifications

| Graphical | |
|-------------------------|--------------------------------------|
| Critical Level | Open Print |
| Moving Average Cross | 5 & 20 EMA |
| Entry Criteria | RBI/GBI |
| Specfic Time | Before Noon |
| Required Price Movement | +/- \$1.00 IN APPRIOPRIATE DIRECTION |

Initial Measurements

| | | | | |
|------------------------------------------------------------------------|---|----|---|------------------------|
| = 1 or more samples tested do not meet the HPT required specification. | | | | |
| Number of Trades that did not meet profitable requirments | 3 | of | 3 | Notes and Observations |
| | | | | Successful ORB |

Initial Measurements

12/9/2025



Notes

| | |
|----------------------|---------------|
| Set up: | HPT CROSSOVER |
| Month Tested | DEC |
| HPT CROSS WIN RATIO: | 72.00% |

Required Specifications

| Graphical | | | | |
|-----------------------------------------------------------|------------------------------------------------------------------------|--------------------------------------|---|------------------------|
| Critical Level | | Open Print | | |
| Moving Average Cross | | 5 & 20 EMA | | |
| Entry Criteria | | RBI/GBI | | |
| Specifc Time | | Before Noon | | |
| Required Price Movement | | +/- \$1.00 IN APPRIOPRIATE DIRECTION | | |
| Initial Measurements | | | | |
| | = 1 or more samples tested do not meet the HPT required specification. | | | |
| Number of Trades that did not meet profitable requirments | 4 | of | 4 | Notes and Observations |
| | | | | Successful ORB |

Initial Measurements

12/9/2025



Notes

Healthy 5 min trend
At the 1 hr 9DEMA

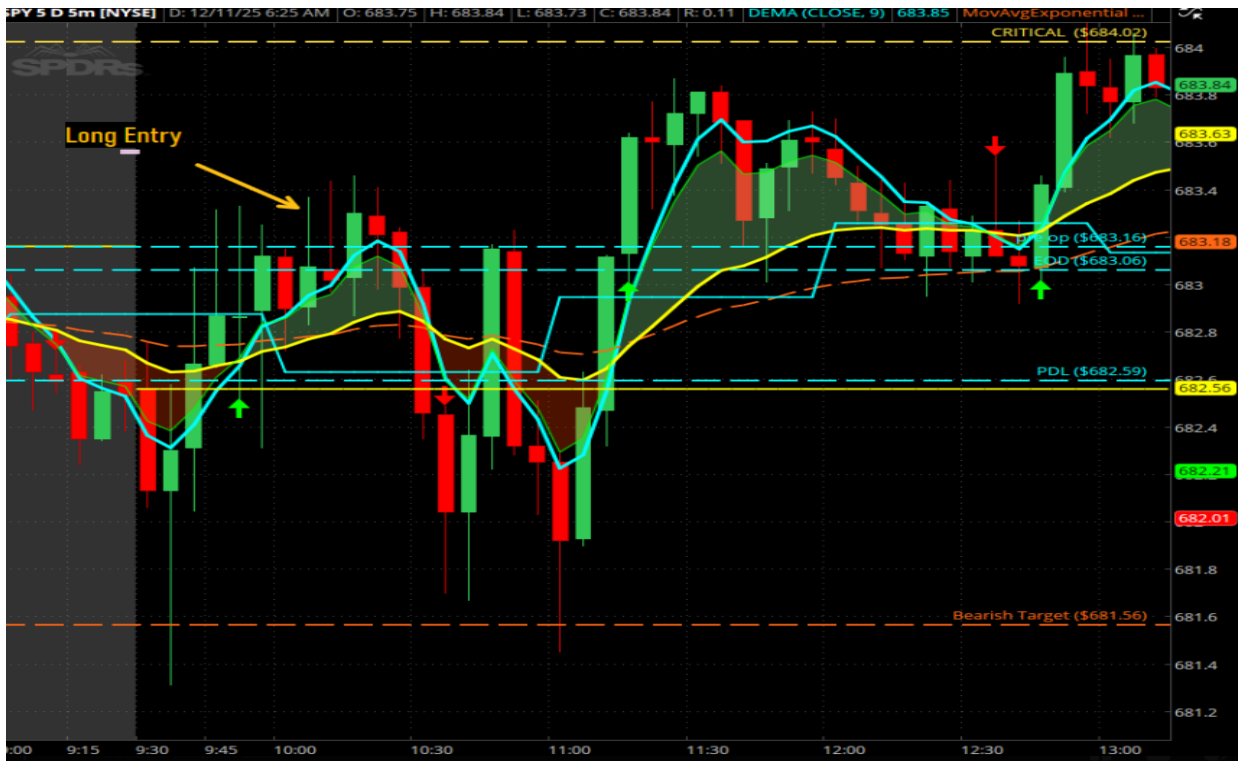
| | |
|----------------------|---------------|
| Set up: | HPT CROSSOVER |
| Month Tested | DEC |
| HPT CROSS WIN RATIO: | 72.00% |

Required Specifications

| Graphical | | | | |
|-----------------------------------------------------------|------------------------------------------------------------------------|--------------------------------------|---|------------------------|
| Critical Level | | Open Print | | |
| Moving Average Cross | | 5 & 20 EMA | | |
| Entry Criteria | | RBI/GBI | | |
| Specifc Time | | Before Noon | | |
| Required Price Movement | | +/- \$1.00 IN APPRIOPRIATE DIRECTION | | |
| Initial Measurements | | | | |
| | = 1 or more samples tested do not meet the HPT required specification. | | | |
| Number of Trades that did not meet profitable requirments | 5 | of | 5 | Notes and Observations |
| | | | | Successful ORB |

Initial Measurements

12/10/2025



Notes

Powell speaking contributed to low volume, choppy, unhealthy market conditions

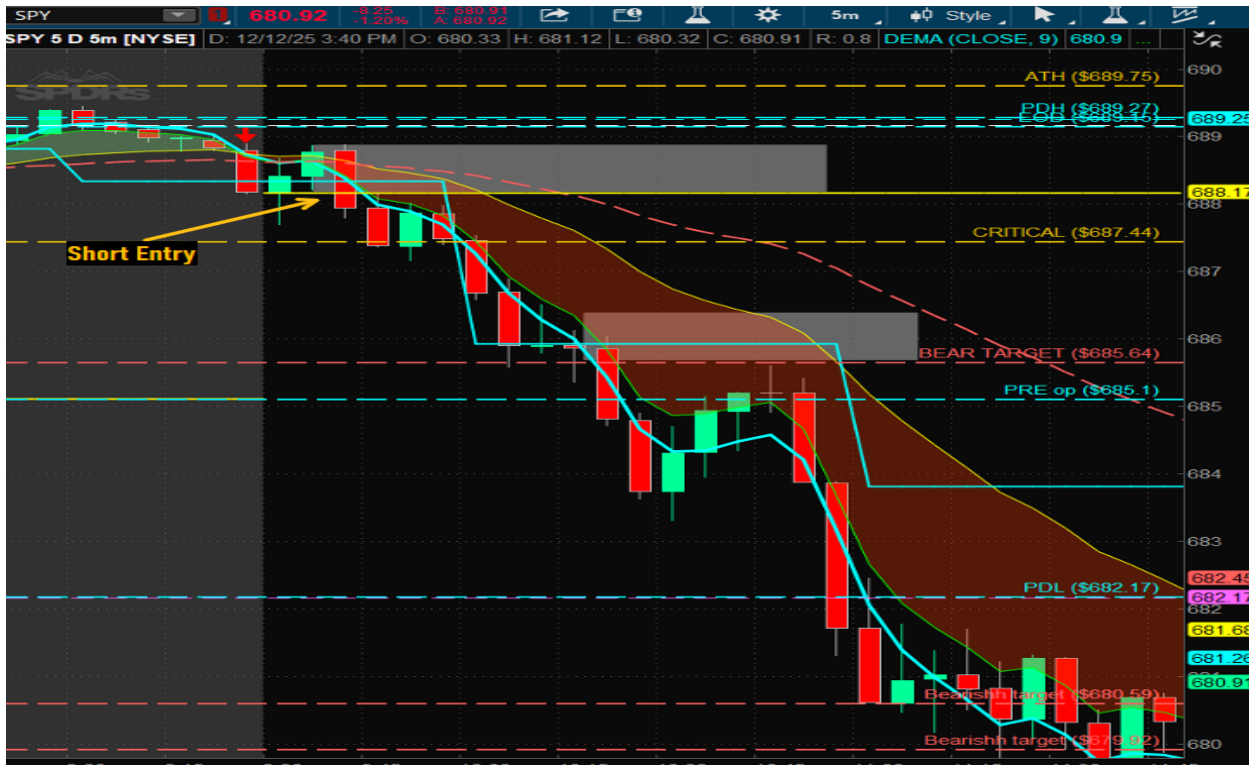
| | |
|----------------------|---------------|
| Set up: | HPT CROSSOVER |
| Month Tested | DEC |
| HPT CROSS WIN RATIO: | 72.00% |

Required Specifications

| Graphical | | | | |
|-----------------------------------------------------------|------------------------------------------------------------------------|--------------------------------------|---|------------------------|
| Critical Level | | Open Print | | |
| Moving Average Cross | | 5 & 20 EMA | | |
| Entry Criteria | | RBI/GBI | | |
| Specifc Time | | Before Noon | | |
| Required Price Movement | | +/- \$1.00 IN APPRIOPRIATE DIRECTION | | |
| <u>Initial Measurements</u> | | | | |
| | = 1 or more samples tested do not meet the HPT required specification. | | | |
| Number of Trades that did not meet profitable requirments | 6 | of | 6 | Notes and Observations |
| | | | | Successful ORB |

Initial Measurements

12/12/2025



Notes

healthy 5 mi trend
healthy 1 hr trend

Set up: HPT CROSSOVER

Month Tested: DEC

HPT CROSS WIN RATIO: 72.00%

Required Specifications

Graphical

| | |
|-------------------------|--------------------------------------|
| Critical Level | Open Print |
| Moving Average Cross | 5 & 20 EMA |
| Entry Criteria | RBI/GBI |
| Specifc Time | Before Noon |
| Required Price Movement | +/- \$1.00 IN APPRIOPRIATE DIRECTION |

Initial Measurements

1 = 1 or more samples tested do not meet the HPT required specification.

| | | | | |
|-----------------------------------------------------------|---|----|---|------------------------|
| Number of Trades that did not meet profitable requirments | 7 | of | 7 | Notes and Observations |
| | | | | Successful ORB |

Initial Measurements

12/12/2025



Notes

healthy 5 mi trend

healthy 1 hr trend

| | |
|----------------------|---------------|
| Set up: | HPT CROSSOVER |
| Month Tested | Jan-26 |
| HPT CROSS WIN RATIO: | 70.00% |

Required Specifications

| Graphical | | | | |
|-----------------------------|------------------------------------------------------------------------|--------------------------------------|---|------------------------|
| Critical Level | | Open Print | | |
| Moving Average Cross | | 5 & 20 EMA | | |
| Entry Criteria | | RBI/GBI | | |
| Specifc Time | | Before Noon | | |
| Required Price Movement | | +/- \$1.00 IN APPRIOPRIATE DIRECTION | | |
| <u>Initial Measurements</u> | | | | |
| | = 1 or more samples tested do not meet the HPT required specification. | | | |
| | 1 | of | 4 | Notes and Observations |
| | | | | at 1 hr trend |

Initial Measurements

1/13/2026



Notes

Aggressive selling leading to 50% FIB retracement.

HIGH TRADER PERFORMANCE

Data Plots

| | |
|----------------------|---------------|
| Set up: | HPT CROSSOVER |
| Month Tested | Jan-26 |
| HPT CROSS WIN RATIO: | 72.00% |

Required Specifications

| Graphical | | | | |
|-----------------------------------------------------------|------------------------------------------------------------------------|--------------------------------------|---|------------------------|
| Critical Level | | Open Print | | |
| Moving Average Cross | | 5 & 20 EMA | | |
| Entry Criteria | | RBI/GBI | | |
| Specifc Time | | Before Noon | | |
| Required Price Movement | | +/- \$1.00 IN APPRIOPRIATE DIRECTION | | |
| <u>Initial Measurements</u> | | | | |
| | = 1 or more samples tested do not meet the HPT required specification. | | | |
| Number of Trades that did not meet profitable requirments | 2 | of | 4 | Notes and Observations |
| | | | | at 1 hr trend |

Initial Measurements

1/14/2026



Notes

healthy 5 min trend
at 1 hr 9DEMA
respecting 2 min 20 EMA

| | |
|----------------------|---------------|
| Set up: | HPT CROSSOVER |
| Month Tested | Jan-26 |
| HPT CROSS WIN RATIO: | 72.00% |

Required Specifications

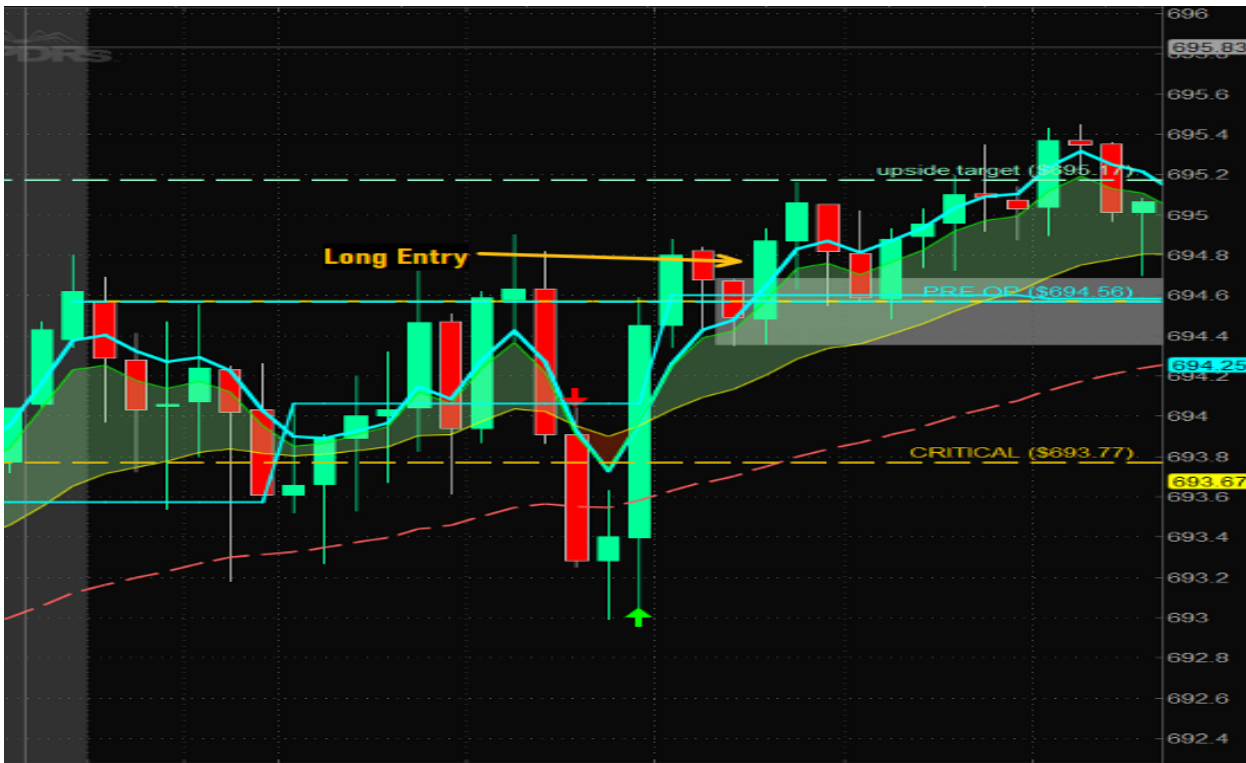
| Graphical | |
|-------------------------|--------------------------------------|
| Critical Level | Open Print |
| Moving Average Cross | 5 & 20 EMA |
| Entry Criteria | RBI/GBI |
| Specifc Time | Before Noon |
| Required Price Movement | +/- \$1.00 IN APPRIOPRIATE DIRECTION |

Initial Measurements

| | | | | |
|------------------------------------------------------------------------|---|----|---|------------------------|
| = 1 or more samples tested do not meet the HPT required specification. | | | | |
| Number of Trades that did not meet profitable requirments | 3 | of | 4 | Notes and Observations |
| | | | | at 1 hr trend |

Initial Measurements

1/15/2026



Notes

Choppy morning
at 1 hr 9DEMA

Set up: HPT CROSSOVER

Month Tested Jan-26

HPT CROSS WIN RATIO: 72.00%

Required Specifications

Graphical

| | |
|-------------------------|--------------------------------------|
| Critical Level | Open Print |
| Moving Average Cross | 5 & 20 EMA |
| Entry Criteria | RBI/GBI |
| Specfic Time | Before Noon |
| Required Price Movement | +/- \$1.00 IN APPRIOPRIATE DIRECTION |

Initial Measurements

1 = 1 or more samples tested do not meet the HPT required specification.

| | | | | |
|-----------------------------------------------------------|---|----|---|------------------------|
| Number of Trades that did not meet profitable requirments | 4 | of | 4 | Notes and Observations |
| | | | | at 1 hr trend |

Initial Measurements

1/16/2026



Notes

clean price action

| | |
|----------------------|---------------|
| Set up: | HPT CROSSOVER |
| Month Tested | JAN |
| HPT CROSS WIN RATIO: | 72.00% |

Required Specifications

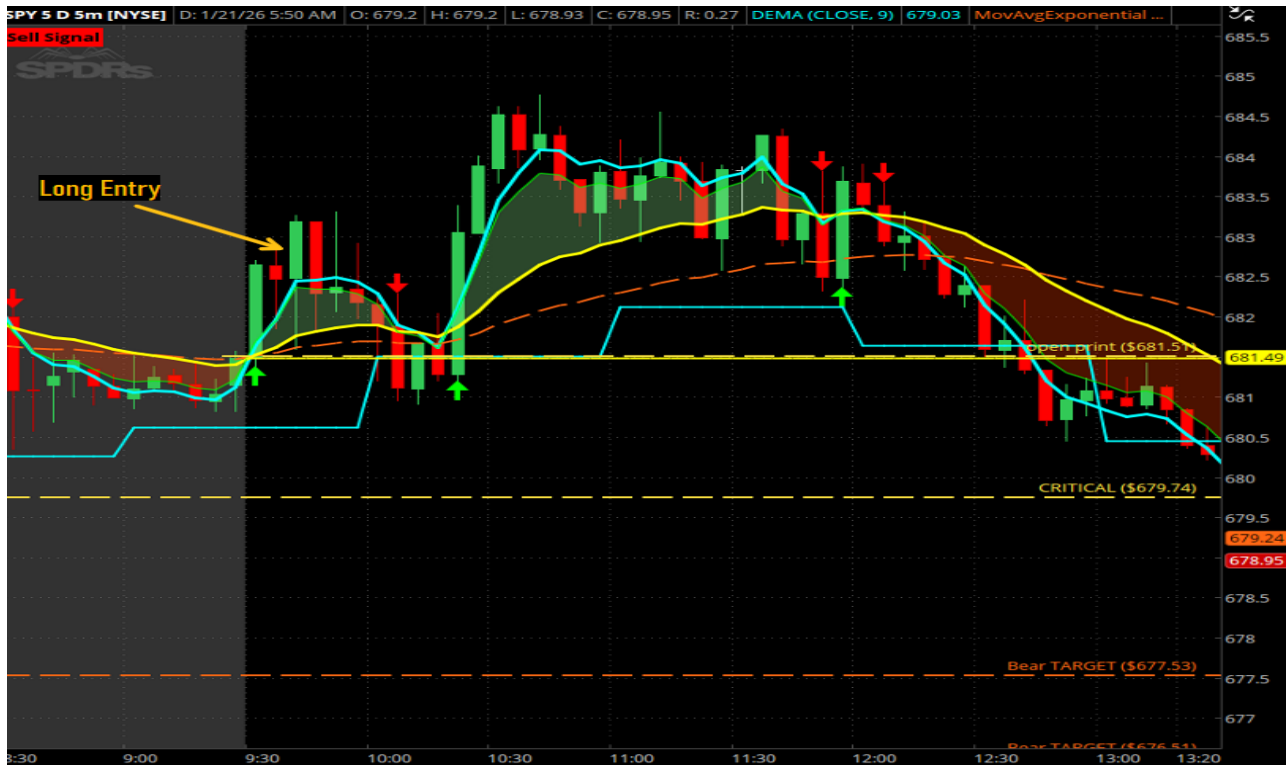
| Graphical | |
|-------------------------|--------------------------------------|
| Critical Level | Open Print |
| Moving Average Cross | 5 & 20 EMA |
| Entry Criteria | RBI/GBI |
| Specfic Time | Before Noon |
| Required Price Movement | +/- \$1.00 IN APPRIOPRIATE DIRECTION |

Initial Measurements

| | | | | |
|------------------------------------------------------------------------|---|----|---|---------------------------|
| = 1 or more samples tested do not meet the HPT required specification. | | | | |
| Number of Trades that did not meet profitable requirments | 1 | of | 7 | Notes and Observations |
| | | | | 2.10 away from 1 hr 9DEMA |

Initial Measurements

1/20/2025



Notes

2.10 away from 1 hr 9DEMA
off open print

| | |
|----------------------|---------------|
| Set up: | HPT CROSSOVER |
| Month Tested | JAN |
| HPT CROSS WIN RATIO: | 76.00% |

Required Specifications

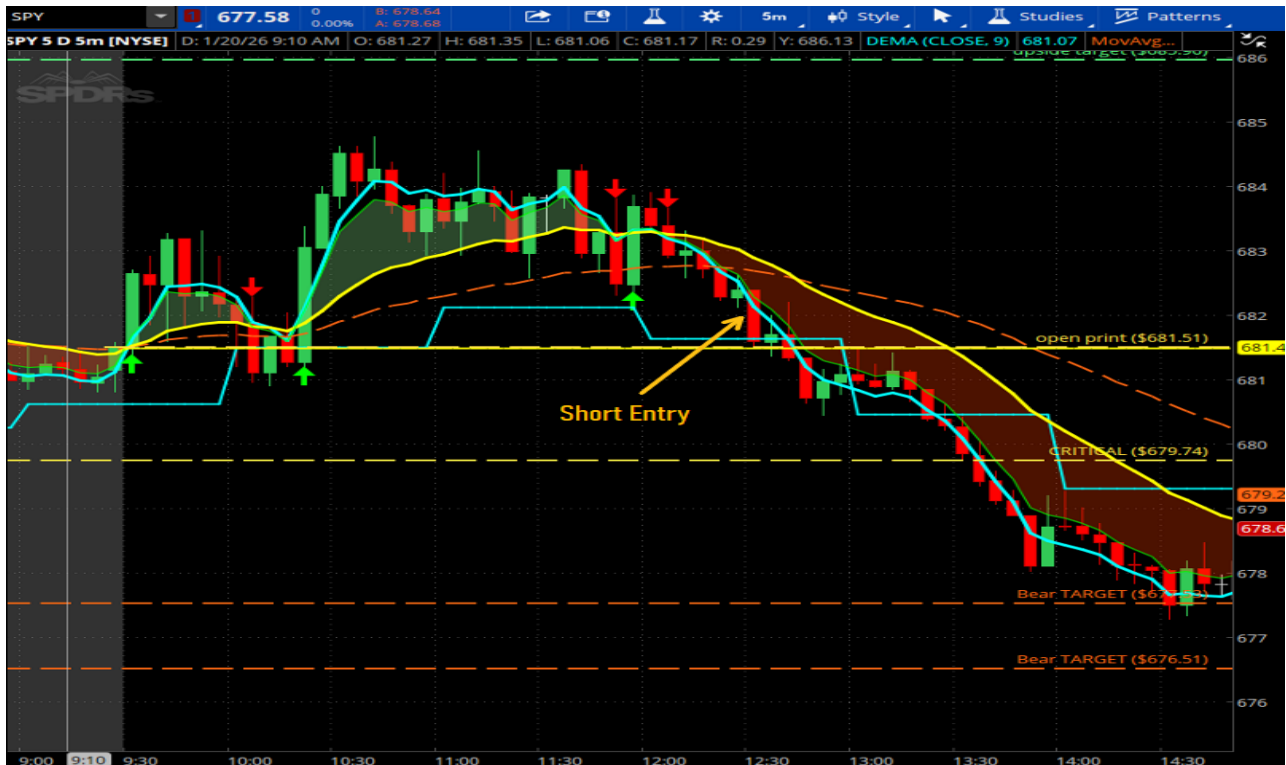
| Graphical | |
|-------------------------|--------------------------------------|
| Critical Level | Open Print |
| Moving Average Cross | 5 & 20 EMA |
| Entry Criteria | RBI/GBI |
| Specifc Time | Before Noon |
| Required Price Movement | +/- \$1.00 IN APPRIOPRIATE DIRECTION |

Initial Measurements

| | | | | |
|------------------------------------------------------------------------|---|----|---|--------------------------|
| = 1 or more samples tested do not meet the HPT required specification. | | | | |
| Number of Trades that did not meet profitable requirments | 2 | of | 7 | Notes and Observations |
| | | | | .31 away from 1 hr 9DEMA |

Initial Measurements

1/20/2025



Notes

.31 away from 1 hr 9DEMA
off open print

| | |
|----------------------|---------------|
| Set up: | HPT CROSSOVER |
| Month Tested | JAN |
| HPT CROSS WIN RATIO: | 76.00% |

Required Specifications

| Graphical | |
|-------------------------|--------------------------------------|
| Critical Level | Open Print |
| Moving Average Cross | 5 & 20 EMA |
| Entry Criteria | RBI/GBI |
| Specfic Time | Before Noon |
| Required Price Movement | +/- \$1.00 IN APPRIOPRIATE DIRECTION |

Initial Measurements

| | | | | |
|------------------------------------------------------------------------|---|----|---|-------------------------------|
| = 1 or more samples tested do not meet the HPT required specification. | | | | |
| Number of Trades that did not meet profitable requirments | 3 | of | 7 | Notes and Observations |
| | | | | 11 cents away from 1 hr 9DEMA |

Initial Measurements

1/20/2025



Notes

11 cents away from 1 hr 9DEMA
off EOD

| | |
|----------------------|---------------|
| Set up: | HPT CROSSOVER |
| Month Tested | JAN |
| HPT CROSS WIN RATIO: | 76.00% |

Required Specifications

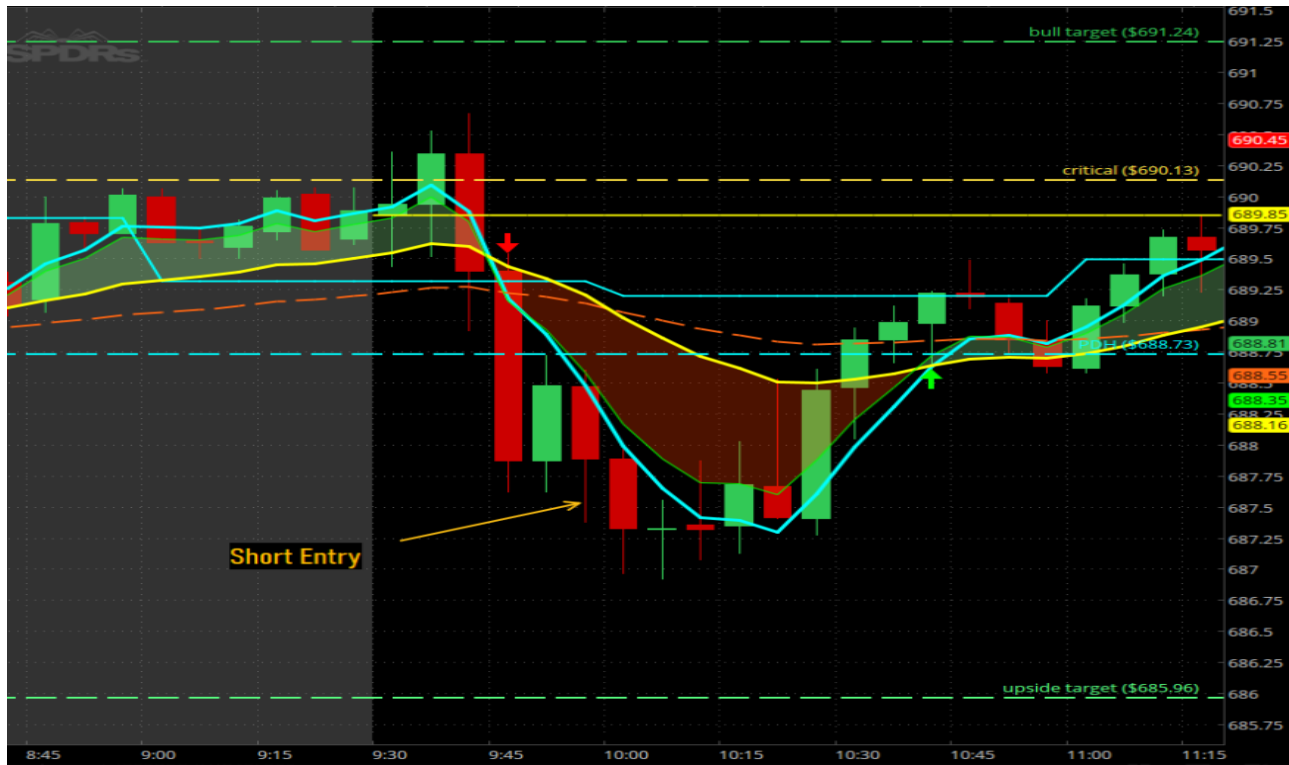
| Graphical | |
|-------------------------|--------------------------------------|
| Critical Level | Open Print |
| Moving Average Cross | 5 & 20 EMA |
| Entry Criteria | RBI/GBI |
| Specifc Time | Before Noon |
| Required Price Movement | +/- \$1.00 IN APPRIOPRIATE DIRECTION |

Initial Measurements

| | | | | |
|------------------------------------------------------------------------|---|----|---|-----------------------------|
| = 1 or more samples tested do not meet the HPT required specification. | | | | |
| Number of Trades that did not meet profitable requirments | 4 | of | 7 | Notes and Observations |
| | | | | \$1.70 away from 1 hr 9DEMA |

Initial Measurements

1/22/2025



Notes

\$1.70 away from 1 hr 9DEMA

| | |
|----------------------|---------------|
| Set up: | HPT CROSSOVER |
| Month Tested | DEC |
| HPT CROSS WIN RATIO: | 72.00% |

Required Specifications

| Graphical | |
|-------------------------|--------------------------------------|
| Critical Level | Open Print |
| Moving Average Cross | 5 & 20 EMA |
| Entry Criteria | RBI/GBI |
| Specifc Time | Before Noon |
| Required Price Movement | +/- \$1.00 IN APPRIOPRIATE DIRECTION |

Initial Measurements

| | | | | |
|------------------------------------------------------------------------|---|----|---|-----------------------------|
| = 1 or more samples tested do not meet the HPT required specification. | | | | |
| Number of Trades that did not meet profitable requirments | 5 | of | 7 | Notes and Observations |
| | | | | \$.20 away from 1 hr 9DEMA |

Initial Measurements

1/22/2025



Notes

\$.20 away from 1 hr 9DEMA

| | |
|----------------------|---------------|
| Set up: | HPT CROSSOVER |
| Month Tested | DEC |
| HPT CROSS WIN RATIO: | 76.00% |

Required Specifications

| Graphical | |
|-------------------------|--------------------------------------|
| Critical Level | Open Print |
| Moving Average Cross | 5 & 20 EMA |
| Entry Criteria | RBI/GBI |
| Specifc Time | Before Noon |
| Required Price Movement | +/- \$1.00 IN APPRIOPRIATE DIRECTION |

Initial Measurements

| | | | | |
|------------------------------------------------------------------------|---|----|---|-----------------------------|
| = 1 or more samples tested do not meet the HPT required specification. | | | | |
| Number of Trades that did not meet profitable requirments | 6 | of | 7 | Notes and Observations |
| | | | | \$.32 away from 1 hr 9DEMA |

Initial Measurements

1/23/2025



Notes

\$.32 away from 1 hr 9DEMA

| | |
|----------------------|---------------|
| Set up: | HPT CROSSOVER |
| Month Tested | DEC |
| HPT CROSS WIN RATIO: | 76.00% |

Required Specifications

| Graphical | |
|-------------------------|--------------------------------------|
| Critical Level | Open Print |
| Moving Average Cross | 5 & 20 EMA |
| Entry Criteria | RBI/GBI |
| Specfic Time | Before Noon |
| Required Price Movement | +/- \$1.00 IN APPRIOPRIATE DIRECTION |

Initial Measurements

| | | | | |
|------------------------------------------------------------------------|---|----|---|-----------------------------|
| = 1 or more samples tested do not meet the HPT required specification. | | | | |
| Number of Trades that did not meet profitable requirments | 7 | of | 7 | Notes and Observations |
| | | | | \$.47 away from 1 hr 9DEMA |

Initial Measurements

1/23/2025



Notes

Playing into the 1 hr 9 DEMA \$.47 away from 1 hr 9DEMA

Data Plots

| | |
|----------------------|---------------|
| Set up: | HPT CROSSOVER |
| Month Tested | Jan-26 |
| HPT CROSS WIN RATIO: | 76.00% |

Required Specifications

| Graphical | | | | |
|-----------------------------------------------------------|------------------------------------------------------------------------|----|---|--------------------------|
| Critical Level | Open Print | | | |
| Moving Average Cross | 5 & 20 EMA | | | |
| Entry Criteria | RBI/GBI | | | |
| Specifc Time | Before Noon | | | |
| Required Price Movement | +/- \$1.00 IN APPRIOPRIATE DIRECTION | | | |
| <u>Initial Measurements</u> | | | | |
| | = 1 or more samples tested do not meet the HPT required specification. | | | |
| Number of Trades that did not meet profitable requirments | 1 | of | 5 | Notes and Observations |
| | | | | .19 AWAY FROM 1 HR 9DEMA |

Initial Measurements

1/27/2026



Notes

| | |
|----------------------|---------------|
| Set up: | HPT CROSSOVER |
| Month Tested | Jan-26 |
| HPT CROSS WIN RATIO: | 76.00% |

Required Specifications

| Graphical | |
|-------------------------|--------------------------------------|
| Critical Level | Open Print |
| Moving Average Cross | 5 & 20 EMA |
| Entry Criteria | RBI/GBI |
| Specfic Time | Before Noon |
| Required Price Movement | +/- \$1.00 IN APPRIOPRIATE DIRECTION |

Initial Measurements

| | | | | |
|------------------------------------------------------------------------|---|----|---|--------------------------|
| = 1 or more samples tested do not meet the HPT required specification. | | | | |
| Number of Trades that did not meet profitable requirments | 2 | of | 5 | Notes and Observations |
| | | | | .69 Away from 1 hr 9DEMA |

S

Initial Measurements

1/28/2026



Notes

5 MIN 20 EMA WAS A WALL

| | |
|----------------------|---------------|
| Set up: | HPT CROSSOVER |
| Month Tested | Jan-26 |
| HPT CROSS WIN RATIO: | 76.00% |

Required Specifications

| Graphical | |
|-------------------------|--------------------------------------|
| Critical Level | Open Print |
| Moving Average Cross | 5 & 20 EMA |
| Entry Criteria | RBI/GBI |
| Specifc Time | Before Noon |
| Required Price Movement | +/- \$1.00 IN APPRIOPRIATE DIRECTION |

Initial Measurements

| | | | | |
|------------------------------------------------------------------------|---|----|---|---------------------------|
| = 1 or more samples tested do not meet the HPT required specification. | | | | |
| Number of Trades that did not meet profitable requirments | 3 | of | 5 | Notes and Observations |
| | | | | 0.00 away from 1 hr 9DEMA |

Initial Measurements

1/28/2026



Notes

5 MIN 20 EMA WAS A WALL

HIGH TRADER PERFORMANCE

Data Plots

| | |
|----------------------|---------------|
| Set up: | HPT CROSSOVER |
| Month Tested | Jan-26 |
| HPT CROSS WIN RATIO: | 76.00% |

Required Specifications

| Graphical | |
|-------------------------|--------------------------------------|
| Critical Level | Open Print |
| Moving Average Cross | 5 & 20 EMA |
| Entry Criteria | RBI/GBI |
| Specifc Time | Before Noon |
| Required Price Movement | +/- \$1.00 IN APPRIOPRIATE DIRECTION |

Initial Measurements

| | | | | |
|------------------------------------------------------------------------|---|----|---|---------------------------|
| = 1 or more samples tested do not meet the HPT required specification. | | | | |
| Number of Trades that did not meet profitable requirments | 3 | of | 5 | Notes and Observations |
| | | | | 0.00 away from 1 hr 9DEMA |

Initial Measurements

1/28/2026



Notes

5 MIN 20 EMA WAS A WALL

| | |
|----------------------|---------------|
| Set up: | HPT CROSSOVER |
| Month Tested | Jan-26 |
| HPT CROSS WIN RATIO: | 76.00% |

Required Specifications

| Graphical | |
|-------------------------|--------------------------------------|
| Critical Level | Open Print |
| Moving Average Cross | 5 & 20 EMA |
| Entry Criteria | RBI/GBI |
| Specfic Time | Before Noon |
| Required Price Movement | +/- \$1.00 IN APPRIOPRIATE DIRECTION |

Initial Measurements

| | | | | |
|------------------------------------------------------------------------|---|----|---|--------------------------|
| = 1 or more samples tested do not meet the HPT required specification. | | | | |
| Number of Trades that did not meet profitable requirments | 3 | of | 5 | Notes and Observations |
| | | | | .36 away from 1 hr 9DEMA |

Initial Measurements

1/28/2026



Notes

5 MIN 20 EMA WAS A WALL Playing off previous AOV

HIGH TRADER PERFORMANCE

Data Plots

| | |
|----------------------|---------------|
| Set up: | HPT CROSSOVER |
| Month Tested | Jan-26 |
| HPT CROSS WIN RATIO: | 76.00% |

Required Specifications

| Graphical | |
|-------------------------|--------------------------------------|
| Critical Level | Open Print |
| Moving Average Cross | 5 & 20 EMA |
| Entry Criteria | RBI/GBI |
| Specifc Time | Before Noon |
| Required Price Movement | +/- \$1.00 IN APPRIOPRIATE DIRECTION |

Initial Measurements

| | | | | |
|------------------------------------------------------------------------|---|----|---|-----------------------------|
| = 1 or more samples tested do not meet the HPT required specification. | | | | |
| Number of Trades that did not meet profitable requirments | 4 | of | 5 | Notes and Observations |
| | | | | \$2.49 away from 1 hr 9DEMA |

Initial Measurements

1/29/2026



Notes

Playing off PDL

| | |
|----------------------|---------------|
| Set up: | HPT CROSSOVER |
| Month Tested | Jan-26 |
| HPT CROSS WIN RATIO: | 76.00% |

Required Specifications

| Graphical | |
|-------------------------|--------------------------------------|
| Critical Level | Open Print |
| Moving Average Cross | 5 & 20 EMA |
| Entry Criteria | RBI/GBI |
| Specifc Time | Before Noon |
| Required Price Movement | +/- \$1.00 IN APPRIOPRIATE DIRECTION |

Initial Measurements

| | | | | |
|------------------------------------------------------------------------|---|----|---|--------------------------|
| = 1 or more samples tested do not meet the HPT required specification. | | | | |
| Number of Trades that did not meet profitable requirments | 5 | of | 5 | Notes and Observations |
| | | | | .33 away from 1 hr 9DEMA |

Initial Measurements

1/30/2026



Notes

Playing off OPEN PRINT