

Set up:	HPT CROSSOVER
Month Tested	May-25
WIN RATIO:	71.42%

Required Specifications

Graphical

Critical Level	Open Print
Moving Average Cross	5 & 20 EMA
Entry Criteria	RBI/GBI
Specfic Time	Before Noon
Required Price Movement	+/- \$1.00 IN APPRIOPRIATE DIRECTION

Initial Measurements

= 1 or more samples tested do not meet the HPT required specification.				
Number of Trades that did not meet profitable requirments	6	of	21	Notes and Observations
				Fundamentals Leading to Indecisive Market Conditions

EXAMPLE:

5/1/2025



Set up:	HPT CROSSOVER
Month Tested	September
WIN RATIO:	72.00%
Number of trades	18
Number of Loses	5
Set up:	HPT CROSSOVER
Month Tested	October
WIN RATIO:	72.00%
Number of trades	18
Number of Loses	5
Set up:	HPT CROSSOVER
Month Tested	November
WIN RATIO:	85.00%
Number of trades	20
Number of Loses	3
Set up:	HPT CROSSOVER
Month Tested	December
WIN RATIO:	73.00%
Number of trades	15
Number of Loses	4
Set up:	HPT CROSSOVER
Month Tested	January
WIN RATIO:	75.00%
Number of trades	16
Number of Loses	4
Set up:	HPT CROSSOVER
Month Tested	Febuary
WIN RATIO:	85.00%
Number of trades	20
Number of Loses	3
Set up:	HPT CROSSOVER
Month Tested	March
WIN RATIO:	82.00%
Number of trades	22
Number of Loses	4
Set up:	HPT CROSSOVER
Month Tested	April
WIN RATIO:	76.19%
Number of trades	21
Number of Loses	5
Set up:	HPT CROSSOVER
Month Tested	May
WIN RATIO:	71.42%
Number of trades	21
Number of Loses	6

Large Number Review

135/165= 81.81%

132 winning trades / 162 total trades

Set up:	HPT CROSSOVER
Month Tested	May
WIN RATE:	71.42%

Required Specifications

Graphical	
Critical Level	Open Print
Moving Average Cross	5 & 21 EMA
Entry Criteria	RBI/GBI
Specifc Time	Before Noon
Required Price Movement	+/- \$1.00 IN APPRIOPRIATE DIRECTION

Initial Measurements

= 1 or more samples tested do not meet the HPT required specification.				
Number of Trades that did not meet profitable requirments	1	of	21	Notes and Observations
				Extended from 1 hr trend

Initial Measurements

5/1/2025



Notes

At the 1 hr trend (9DEMA)
healthy 5 min trend (no extensions)
closing above the 50 EMA

Set up:	HPT CROSSOVER
Month Tested	May
WIN RATE:	71.42%

Required Specifications

Graphical				
Critical Level	Open Print			
Moving Average Cross	5 & 21 EMA			
Entry Criteria	RBI/GBI			
Specifc Time	Before Noon			
Required Price Movement	+/- \$1.00 IN APPRIOPRIATE DIRECTION			
Initial Measurements				
	= 1 or more samples tested do not meet the HPT required specification.			
Number of Trades that did not meet profitable requirments	2	of	21	Notes and Observations
				At the 1 hr 9 DEMA

Initial Measurements

5/2/2025



Notes

At the 1 hr trend (9DEMA)
healthy 5 min trend (no extensions)
closing above the 50 EMA

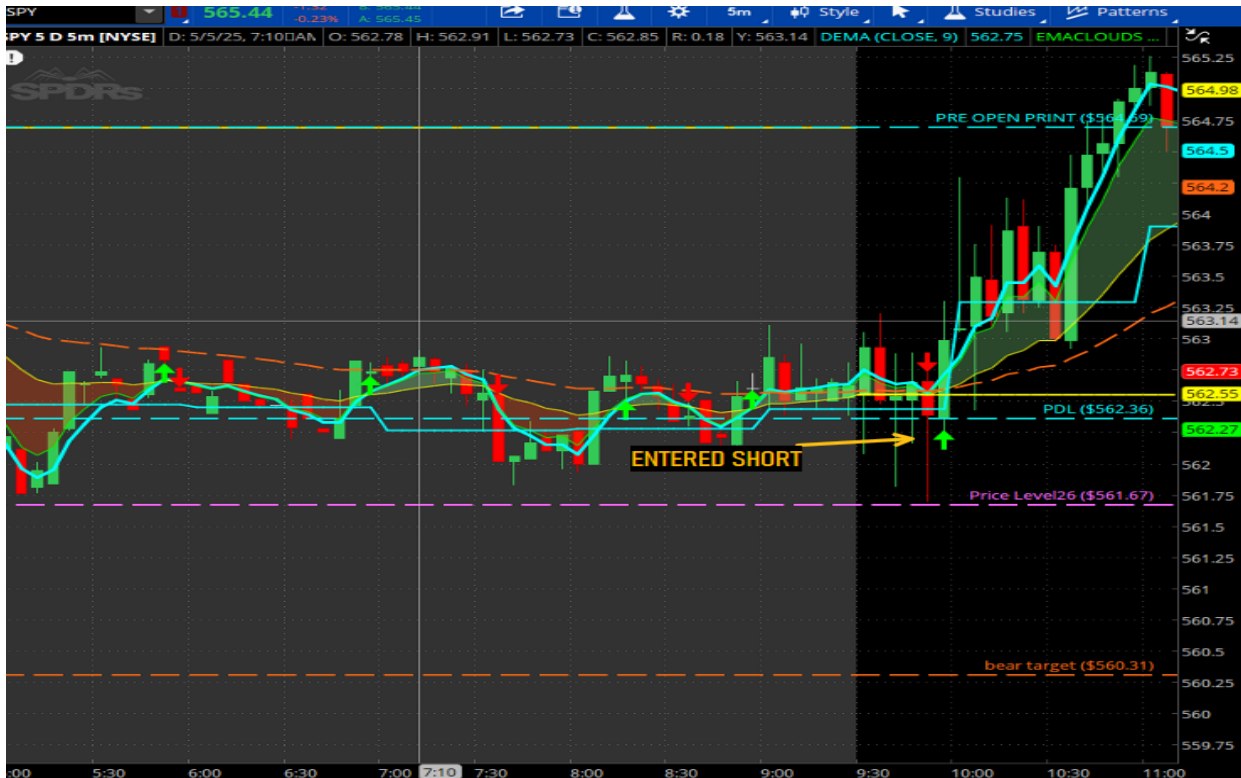
Set up:	HPT CROSSOVER
Month Tested	May
WIN RATE:	71.42%

Required Specifications

Graphical				
Critical Level		Open Print		
Moving Average Cross		5 & 20 EMA		
Entry Criteria		RBI/GBI		
Specifc Time		Before Noon		
Required Price Movement		+/- \$1.00 IN APPRIOPRIATE DIRECTION		
<u>Initial Measurements</u>				
	= 1 or more samples tested do not meet the HPT required specification.			
	3	of	21	Notes and Observations
				AT THE 1 HR 9DEMA

Initial Measurements

5/5/2025



Notes

At the 1 hr trend (9DEMA)
healthy 5 min trend (no extensions)

Set up: HPT CROSSOVER

Month Tested: May

WIN RATE: 71.42%

Required Specifications

Graphical

Critical Level	Open Print
Moving Average Cross	5 & 20 EMA
Entry Criteria	RBI/GBI
Specifc Time	Before Noon
Required Price Movement	+/- \$1.00 IN APPRIOPRIATE DIRECTION

Initial Measurements

1 = 1 or more samples tested do not meet the HPT required specification.

Number of Trades that did not meet profitable requirments

4

of

21

Notes and Observations

AT THE 1 HR 9DEMA

Initial Measurements

5/5/2025



Notes

At the 1 hr trend (9DEMA)
WILD PRICE ACTION AFTER NEWS

Set up:	HPT CROSSOVER
Month Tested	May
WIN RATE:	71.42%

Required Specifications

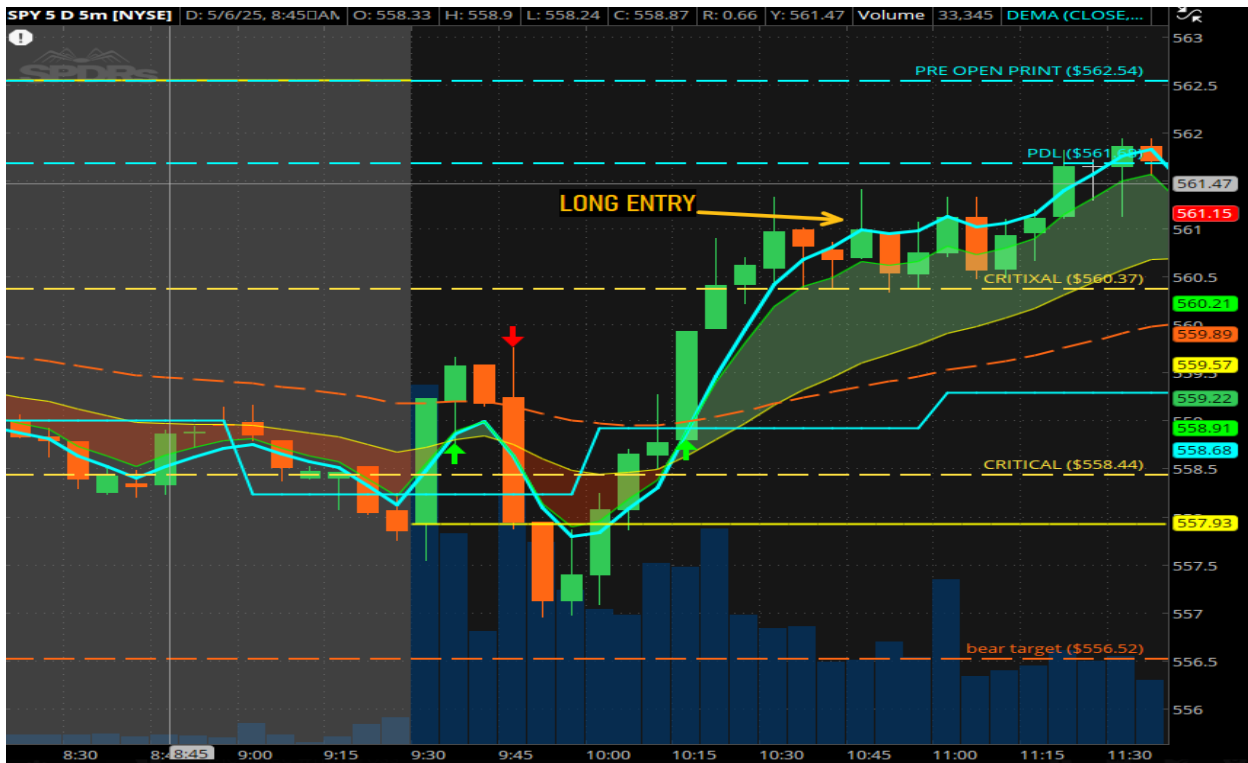
Graphical	
Critical Level	Open Print
Moving Average Cross	5 & 20 EMA
Entry Criteria	RBI/GBI
Specifc Time	Before Noon
Required Price Movement	+/- \$1.00 IN APPRIOPRIATE DIRECTION

Initial Measurements

= 1 or more samples tested do not meet the HPT required specification.				
Number of Trades that did not meet profitable requirments	5	of	21	Notes and Observations
				At the 1 hr 9 DEMA

Initial Measurements

5/6/2025



Notes

Healthy 5 min Trend
EXTENDED from 1 hr trend (9DEMA)

Set up:	HPT CROSSOVER
Month Tested	May
WIN RATE:	71.42%

Required Specifications

Graphical	
Critical Level	Open Print
Moving Average Cross	5 & 20 EMA
Entry Criteria	RBI/GBI
Specifc Time	Before Noon
Required Price Movement	+/- \$1.00 IN APPRIOPRIATE DIRECTION

Initial Measurements

= 1 or more samples tested do not meet the HPT required specification.				
Number of Trades that did not meet profitable requirments	6	of	21	Notes and Observations
				Extended from 1 hr DEMA

Initial Measurements

5/7/2025



Notes

FOMC News Day (low volume before news)
At the 1 hr trend (9DEMA)
Closing above the 50EMA

Set up: HPT CROSSOVER

Month Tested May

WIN RATE: 71.42%

Required Specifications

Graphical

Critical Level	Open Print
Moving Average Cross	5 & 20 EMA
Entry Criteria	RBI/GBI
Specifc Time	Before Noon
Required Price Movement	+/- \$1.00 IN APPRIOPRIATE DIRECTION

Initial Measurements

1 = 1 or more samples tested do not meet the HPT required specification.

Number of Trades that did not meet profitable requirments

7

of

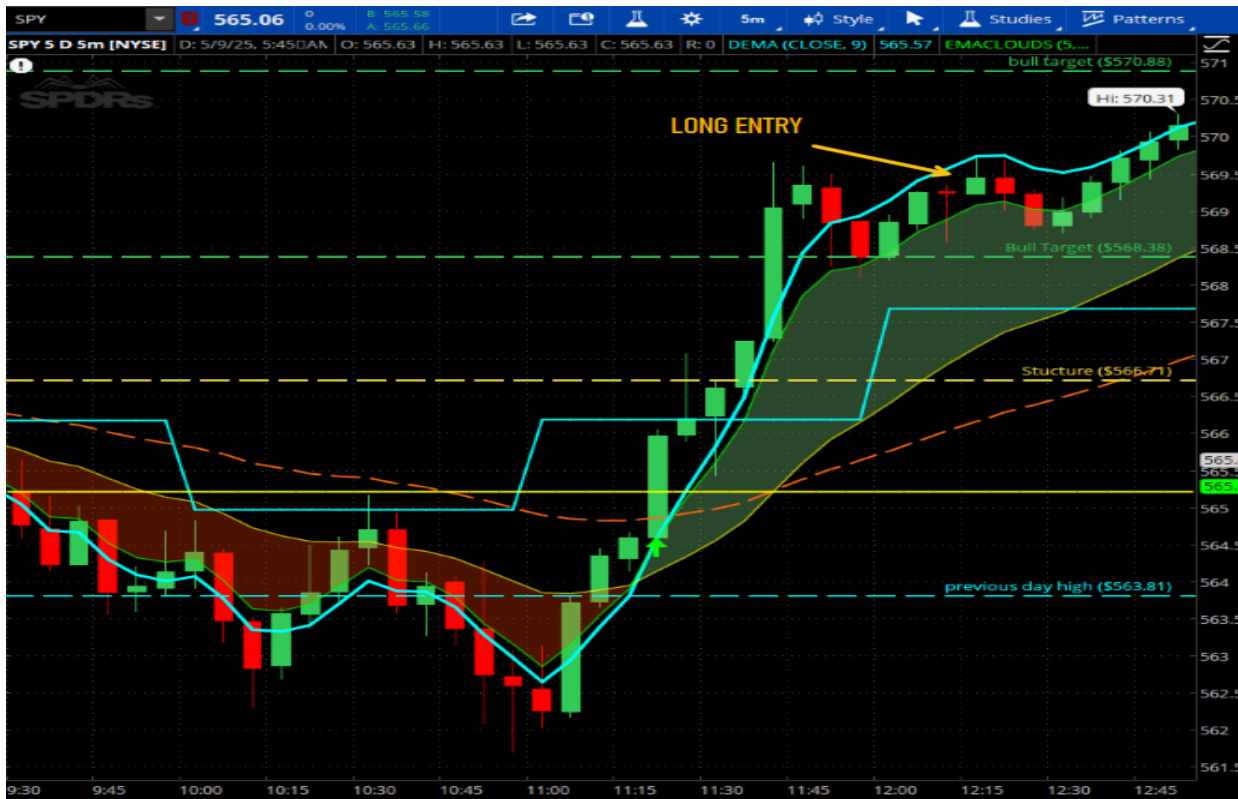
21

Notes and Observations

AT THE 1 HR 9DEMA

Initial Measurements

5/8/2025



Notes

At the 1 hr trend (9DEMA)
Healthy 5 min trend
Respecting 50EMA
Off End of Day

Set up:	HPT CROSSOVER
Month Tested	May
WIN RATE:	66.00%

Required Specifications

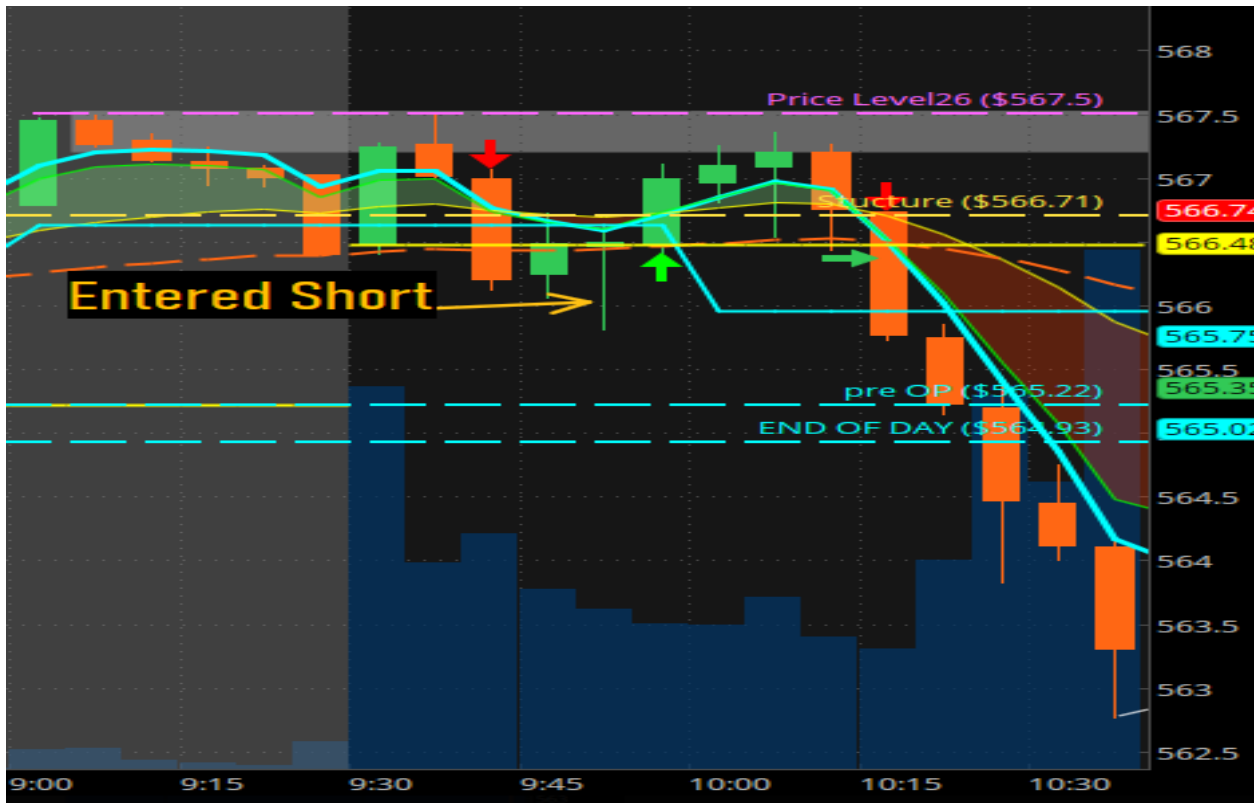
Graphical	
Critical Level	Open Print
Moving Average Cross	5 & 20 EMA
Entry Criteria	RBI/GBI
Specifc Time	Before Noon
Required Price Movement	+/- \$1.00 IN APPRIOPRIATE DIRECTION

Initial Measurements

= 1 or more samples tested do not meet the HPT required specification.				
Number of Trades that did not meet profitable requirments	8	of	21	Notes and Observations
				AT THE 1 HR 9DEMA

Initial Measurements

5/8/2025



Notes

at the 1 hr trend (9DEMA)
closing below the 50 EMA
rejecting open print
rejecting 556.71 (daily timeframe level)

Set up:	HPT CROSSOVER
Month Tested	May
WIN RATE:	71.42%

Required Specifications

Graphical	
Critical Level	Open Print
Moving Average Cross	5 & 20 EMA
Entry Criteria	RBI/GBI
Specifc Time	Before Noon
Required Price Movement	+/- \$1.00 IN APPRIOPRIATE DIRECTION

Initial Measurements

= 1 or more samples tested do not meet the HPT required specification.				
	9	of	21	Notes and Observations
				extended from 1 hr trend

Initial Measurements

5/12/2025



Notes

Far from 1 hr trend (9DEMA)

Set up: HPT CROSSOVER

Month Tested: May

WIN RATE: 71.42%

Required Specifications

Graphical

Critical Level	Open Print
Moving Average Cross	5 & 20 EMA
Entry Criteria	RBI/GBI
Specifc Time	Before Noon
Required Price Movement	+/- \$1.00 IN APPRIOPRIATE DIRECTION

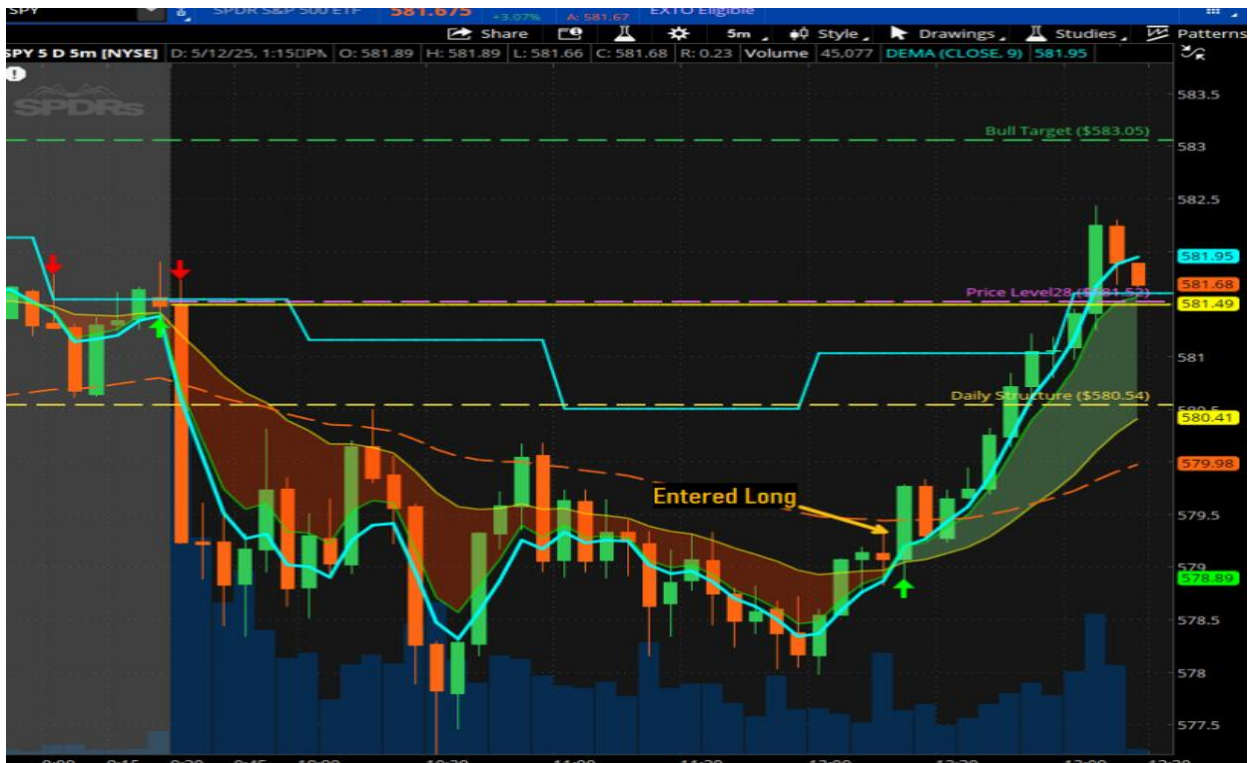
Initial Measurements

1 = 1 or more samples tested do not meet the HPT required specification.

Number of Trades that did not meet profitable requirments	10	of	21	Notes and Observations
				At the 1 hr 9DEMA

Initial Measurements

5/12/2025



Notes

At the 1 hr trend (9DEMA)
Healthy 5 min trend

Set up: HPT CROSSOVER

Month Tested: May

WIN RATE: 71.42%

Required Specifications

Graphical

Critical Level	Open Print
Moving Average Cross	5 & 20 EMA
Entry Criteria	RBI/GBI
Specfic Time	Before Noon
Required Price Movement	+/- \$1.00 IN APPRIOPRIATE DIRECTION

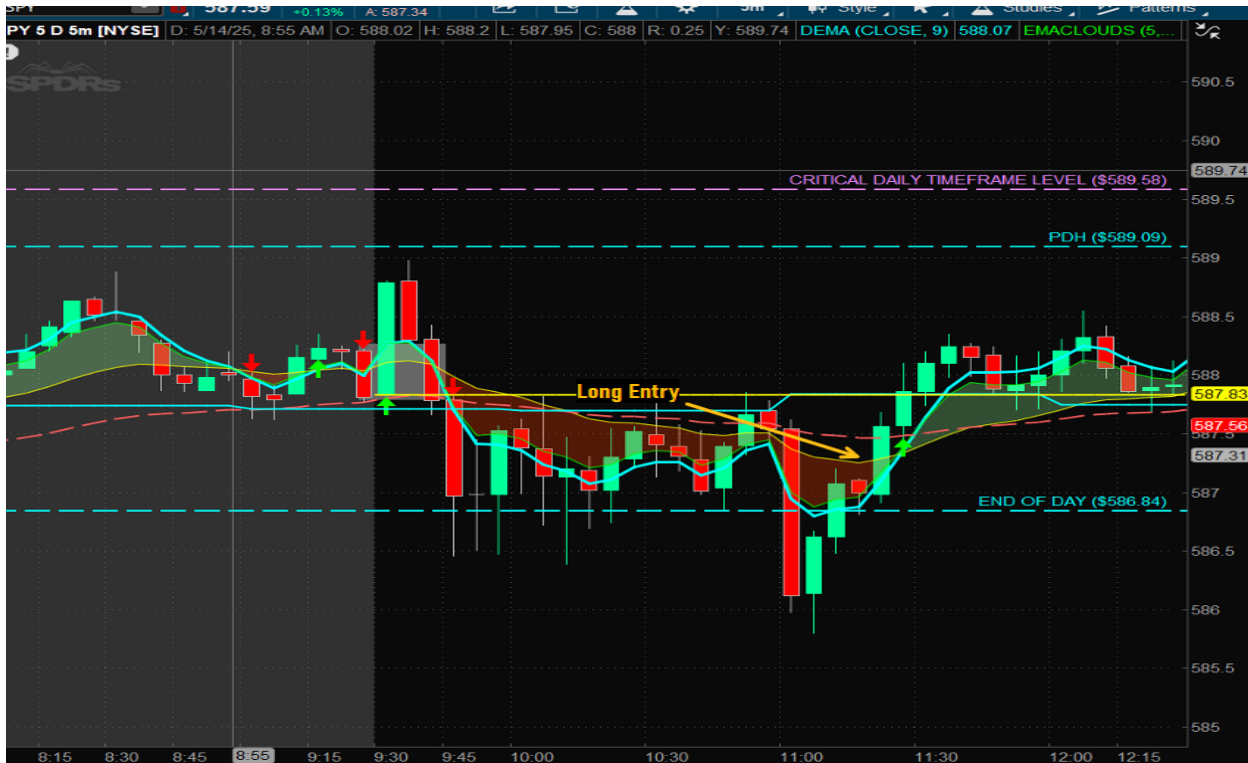
Initial Measurements

1 = 1 or more samples tested do not meet the HPT required specification.

Number of Trades that did not meet profitable requirments	11	of	21	Notes and Observations
				At the 1 hr trend (9DEMA)

Initial Measurements

5/14/2025



Notes

Super extended from 1 hr trend, playing into 1 hr 9DEMA,
Bounce off END OF DAY

Set up:	HPT CROSSOVER
Month Tested	May
WIN RATE:	71.42%

Required Specifications

Graphical	
Critical Level	Open Print
Moving Average Cross	5 & 20 EMA
Entry Criteria	RBI/GBI
Specifc Time	Before Noon
Required Price Movement	+/- \$1.00 IN APPRIOPRIATE DIRECTION

Initial Measurements

= 1 or more samples tested do not meet the HPT required specification.				
Number of Trades that did not meet profitable requirments	12	of	21	Notes and Observations
				At the 1 hr trend (9DEMA)

Initial Measurements

5/16/2025



Notes

Rejecting 1 hr 9DEMA,
Failed to Close above 50 EMA

Set up:	HPT CROSSOVER
Month Tested	May
WIN RATE:	71.42%

Required Specifications

Graphical	
Critical Level	Open Print
Moving Average Cross	5 & 20 EMA
Entry Criteria	RBI/GBI
Specifc Time	Before Noon
Required Price Movement	+/- \$1.00 IN APPRIOPRIATE DIRECTION

Initial Measurements

= 1 or more samples tested do not meet the HPT required specification.				
Number of Trades that did not meet profitable requirments	13	of	21	Notes and Observations
				At the 1 hr trend (9DEMA)

Initial Measurements

4/17/2025



Notes

False break below EOD,
RBI off EOD,

Set up:	HPT CROSSOVER
Month Tested	May
WIN RATIO:	71.42%

Required Specifications

Graphical	
Critical Level	Open Print
Moving Average Cross	5 & 20 EMA
Entry Criteria	RBI/GBI
Specfic Time	Before Noon
Required Price Movement	+/- \$1.00 IN APPRIOPRIATE DIRECTION

Initial Measurements

= 1 or more samples tested do not meet the HPT required specification.				
Number of Trades that did not meet profitable requirments	14	of	21	Notes and Observations
				At 1 hr 9 DEMA

Initial Measurements

5/20/2025



Notes

At the 1 hr trend (9DEMA)
healthy 5 min trend
rejecting 50 EMA

Set up:	HPT CROSSOVER
Month Tested	May
WIN RATIO:	71.42%

Required Specifications

Graphical	
Critical Level	Open Print
Moving Average Cross	5 & 20 EMA
Entry Criteria	RBI/GBI
Specifc Time	Before Noon
Required Price Movement	+/- \$1.00 IN APPRIOPRIATE DIRECTION

Initial Measurements

= 1 or more samples tested do not meet the HPT required specification.				
Number of Trades that did not meet profitable requirments	15	of	21	Notes and Observations
				EXTENDED from 1 hr 9DEMA

Initial Measurements

5/21/2025



Notes

extended from the 1 hr trend (9DEMA)
healthy 5 min trend
cloud rejection

Set up:	HPT CROSSOVER
Month Tested	May
WIN RATIO:	71.42%

Required Specifications

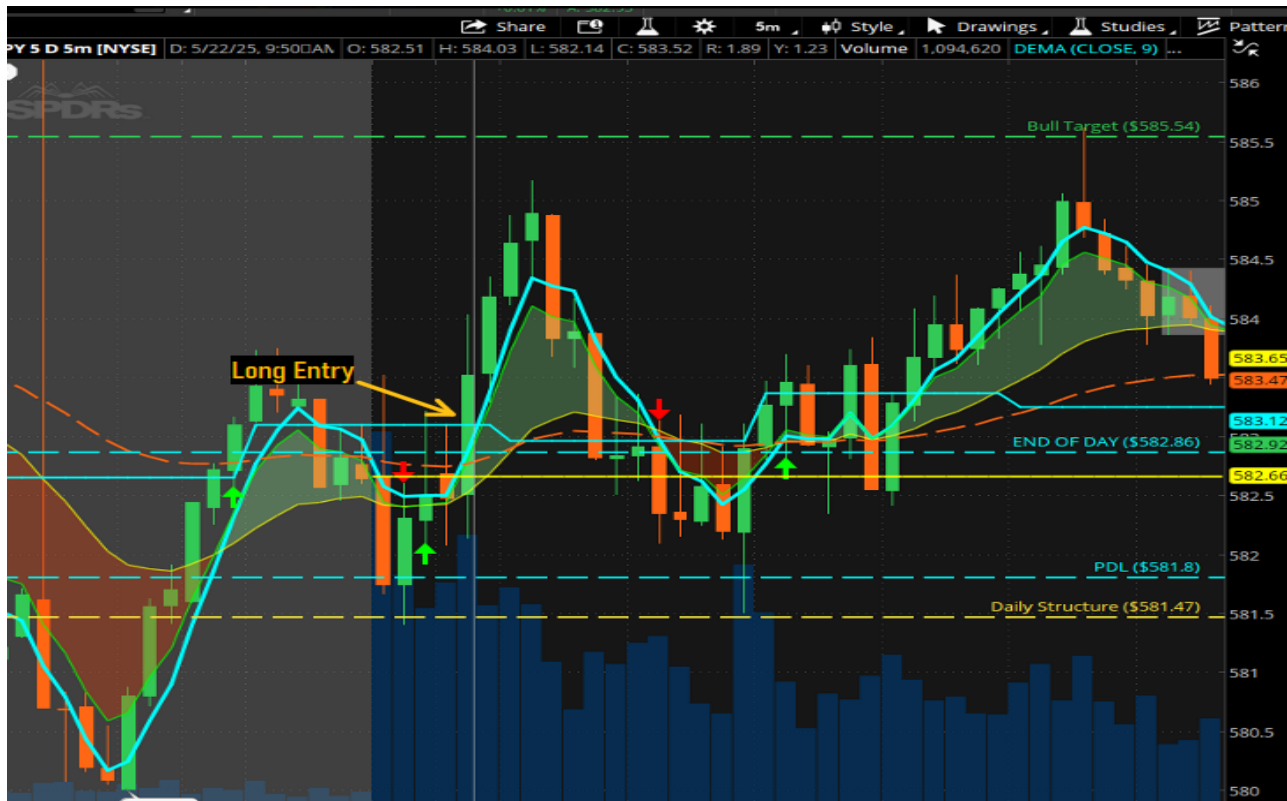
Graphical	
Critical Level	Open Print
Moving Average Cross	5 & 20 EMA
Entry Criteria	RBI/GBI
Specfic Time	Before Noon
Required Price Movement	+/- \$1.00 IN APPRIOPRIATE DIRECTION

Initial Measurements

= 1 or more samples tested do not meet the HPT required specification.				
Number of Trades that did not meet profitable requirments	16	of	21	Notes and Observations
				At 1 hr 9DEMA

Initial Measurements

5/22/2025



Notes

At the 1 hr trend (9DEMA)
healthy 5 min trend
Bouncing off PDL

Set up:	HPT CROSSOVER
Month Tested	May
WIN RATIO:	71.42%

Required Specifications

Graphical	
Critical Level	Open Print
Moving Average Cross	5 & 20 EMA
Entry Criteria	RBI/GBI
Specfic Time	Before Noon
Required Price Movement	+/- \$1.00 IN APPRIOPRIATE DIRECTION

Initial Measurements

= 1 or more samples tested do not meet the HPT required specification.				
Number of Trades that did not meet profitable requirments	17	of	21	Notes and Observations
				At 1 hr 9DEMA

Initial Measurements

5/22/2025



Notes

At the 1 hr trend (9DEMA)
healthy 5 min trend
Bouncing off PDL

Set up:	HPT CROSSOVER
Month Tested	May
WIN RATIO:	71.42%

Required Specifications

Graphical	
Critical Level	Open Print
Moving Average Cross	5 & 20 EMA
Entry Criteria	RBI/GBI
Specifc Time	Before Noon
Required Price Movement	+/- \$1.00 IN APPRIOPRIATE DIRECTION

Initial Measurements

= 1 or more samples tested do not meet the HPT required specification.				
Number of Trades that did not meet profitable requirments	18	of	21	Notes and Observations
				At 1 hr 9DEMA

Initial Measurements

5/23/2025



Notes

At the 1 hr trend (9DEMA)
healthy 5 min trend
Bouncing off PDL

Set up:	HPT CROSSOVER
Month Tested	May
WIN RATIO:	71.42%

Required Specifications

Graphical	
Critical Level	Open Print
Moving Average Cross	5 & 20 EMA
Entry Criteria	RBI/GBI
Specifc Time	Before Noon
Required Price Movement	+/- \$1.00 IN APPRIOPRIATE DIRECTION

Initial Measurements

= 1 or more samples tested do not meet the HPT required specification.				
Number of Trades that did not meet profitable requirments	19	of	21	Notes and Observations
				Playing into 1 hr DEMA

Initial Measurements

5/27/2025



Notes

Playing into 1 hr TF DEMA (bearish extension),
 Closing above 50 EMA,
 Healthy 5 min Trend,
 Buying acceptance above 586.63 (Daily Timeframe Level)

Set up:	HPT CROSSOVER
Month Tested	May
WIN RATIO:	71.42%

Required Specifications

Graphical	
Critical Level	Open Print
Moving Average Cross	5 & 20 EMA
Entry Criteria	RBI/GBI
Specfic Time	Before Noon
Required Price Movement	+/- \$1.00 IN APPRIOPRIATE DIRECTION

Initial Measurements

= 1 or more samples tested do not meet the HPT required specification.				
Number of Trades that did not meet profitable requirments	20	of	21	Notes and Observations
				EXTENDED from 1 hr 9DEMA

Initial Measurements

5/28/2025



Notes

Playing into 1 hr TF DEMA (bearish extension)
 Closing below 50 EMA
 Healthy 5 min Trend
 Sellers defending EOD and PDH

Set up:	HPT CROSSOVER
Month Tested	May
WIN RATIO:	71.42%

Required Specifications

Graphical	
Critical Level	Open Print
Moving Average Cross	5 & 20 EMA
Entry Criteria	RBI/GBI
Specifc Time	Before Noon
Required Price Movement	+/- \$1.00 IN APPRIOPRIATE DIRECTION

Initial Measurements

= 1 or more samples tested do not meet the HPT required specification.				
Number of Trades that did not meet profitable requirments	21	of	21	Notes and Observations
				At 1 hr 9DEMA

Initial Measurements

5/29/2025



Notes

Rejecting EMA Cloud
Healthy 5 min Trend